

Holden

<http://www.village.holden.ab.ca>

Welcome

Welcome to our community! We hope the information contained within this profile is useful. If additional information is required, please contact our representative from the "Key Contacts" section.

The Village of Holden is conveniently located a short 55 minute (93 km) drive Southeast of Edmonton and 45 minute (63 km) drive Northeast of Camrose. Access to Vegreville and the TransCanada Highway is just 25 minutes to the North. This provides Holden the ability to offer its residents easy access to large city amenities, while still allowing them to enjoy peaceful, safe and relaxing small town lifestyles.

Area Overview

The Village of Holden derived its name from the late Mr. J.B. Holden, the first M.L.A. in the constituency for the Province. There were few settlers in the area before 1902. By 1903, the community was starting to be settled with the name Pleasant Ridge chosen. The Village of Holden was formally incorporated as a village on April 14, 1909.

Holden is situated on fairly flat land with wide streets, sidewalks and some paved roads. Homes are well kept and numerous new homes have been built.

Experience the charm of country living when visiting Holden. There is a lot to see in Holden. One can view the Beaver Regional Arts Centre, a museum with a large array of historical items, and the elaborate Holy Ghost Ukrainian Church where tours can be arranged.

Location

The Village of Holden is located heart of the County of Beaver No. 9. It is 95 km Southeast of Edmonton, 63 km Northeast of Camrose and 343 km Northeast of Calgary. It is located alongside Highway 14, and approximately 25 minutes Southeast of the TransCanada highway.

Economic Base

Holden's major economic base is Agriculture and Natural Gas.

Economic Facts

Soils in the Holden area are among the most fertile in the province. There is 3 to 4 times as much nitrogen and organic matter in the surface foot as the average brown or grey wooded soil. Black soil zone, mostly class 2. These soils are deep and hold moisture well. Can produce moderately high productivity for a wide range of crops.

Regional resources include Agriculture, Cereal Grains (Wheat, Barley, oats, Canola, Canary Seed), Cattle and Natural Gas & Coal.

Financial Institutions

Alberta Treasury Branch Agency

Utilities

Cable Television

The Amazing Persona
Tel: 1-866-737-7662

Electrical Power

Epcor
Customer Service
Tel: 310-4300

Fortis
Trouble
Tel: 310-9473

Natural Gas

Direct Energy

Tel: 1-866-420-3174

Telephone

Telus Communications Ltd.

Tel: 310-2255

Internet - High Speed

Beaver County Broadband
Tel: 663-3942

Water Supply

CJ Water Limited an ATCO Company

Waste Management

Sewage treatment is by lagoon, 4 short and 2 long detention.

Taxation

	<u>Residential/Farmland</u>	<u>Non-Residential</u>
<u>2005</u>		
Municipal Tax Rate	2.1900	2.4900
Education - Alberta School Foundation Fund Tax Rate	3.7000	6.9000
Allowance for Non-Collection of Requisitioned Taxes	.1000	.1000
Seniors Lodge Accommodation Tax Rate	.2000	.2000

Mill Rates [1998]

Residential - Public 34.65

Residential - Separate N/A

Non-Residential - Public 45.76

Non-Residential - Separate N/A

Transportation

Air Services

There are two airports located nearby. One in Tofield to the west, and Viking to the east. The nearest commercial and air freight facilities are at Edmonton.

Rail Services

Holden is served by a Canadian National Railway main line from Vancouver to Montreal. Spur trackage is available.

Highways

Connecting highways are Highway 14, leading west to Edmonton and east to Viking, and Secondary Highway 855, leading south to Highway 26.

Trucking Firms

Good's Transport

CN Trucking

Bus Services

Greyhound Bus Lines provides regularly scheduled inter-community bus service.

Couriers and Taxis

Loomis and Purolator Couriers, Canpar

Community Lifestyle

Recreation

Recreation facilities include the Holden Complex for curling/skating, 3 baseball diamonds, and cultural theatre and spray park.

Community Organizations

Local community organizations include the Agricultural Society, Royal Canadian Legion, Local Recreation Board, Municipal Library Board, Masonic Lodge, Historical Society, Minor Hockey Association, Senior's Club, Holden Parent Nursery, Beaver Regional Arts Society, Holden Economic Development Committee, Holden/Bruce & District Recycling Committee and the Holden Community Hall Association.

Religious Services

- United Church
- Roman Catholic Church
- Lutheran Church
- Ukrainian Catholic Church

Special Annual Events/Attractions

The Beaver Regional Arts Centre is in Holden. The museum has a large array of historical items. One may also visit the elaborate Holy Ghost Ukrainian Church where tours can be arranged. The Beaver Regional Arts Centre hosts such events as the annual series, Emeralds Supper show in November and an annual Christmas show every December.

Accommodation

- Holden Hotel

Restaurants

- Country Kitchen
- Patti's Place
- Larry's Family Restaurant

Education

Holden is part of the Battle River Regional School Division, headquartered in Camrose [Tel: 780-672-6131].

Daycare/Nursery

NA

Public

Holden School provides schooling for Grades K to 6. Junior and Senior high school students are bussed to Ryley.

Separate

NA

Private

NA

Post Secondary

Holden residents have access to Edmonton-based post-secondary institutions such as The University of Alberta, Northern Alberta Institute of Technology [NAIT] and Grant MacEwan College.

Health Care

The nearest hospitals are at Tofield, 37 km west of Holden, and at Viking, 32 km east of Holden. There is a senior citizens lodge in Holden.

Emergency Services

Fire Protection

Holden is served by a Volunteer Fire Department [Tel: 911].

Police Services

Holden is served by the Tofield Detachment of the Royal Canadian Mounted Police [RCMP] [Tel: 911].

Ambulance Services

Holden is served by Beaver Emergency Medical Services. They are a federally registered charitable society, operating the Beaver Ambulance service in all of Beaver County, including Tofield, Ryley, Holden, and Viking. They have two Advanced Life Support ambulances stationed in Tofield, and one ALS unit in Viking. Currently there are 28 staff, comprising both full-time and casual/part-time, who are dispatched by the Strathcona emergency dispatch center in Sherwood Park using enhanced 911.

Community Services

Municipal

Village of Holden
Box 357
Holden, Alberta T0B 2C0
Tel: 780-688-3928
Fax: 780-688-2091

Holden Municipal Library
4912 - 50 Street
Holden, Alberta T0B 2C0
Tel: 780-688-3838

Provincial

NA

Federal

Canada Post Office

Climate

Average annual rainfall: 29.36 cm Average annual snow fall: 86.63 cm Droughts are rare with less evaporation and hot winds than in other zones.
Frost free days: 100 - 120 Hours of sunshine: 2180 - 2200.

Key Contacts

Municipal

Village of Holden
Box 357
Holden, Alberta T0B 2C0
Tel: 780-688-3928
Fax: 780-688-2091
vholden@telusplanet.net

Ivan Hrabec
Mayor

Katherine Whiteside
Chief Administrative Officer

Provincial (Updated June, 2001)

Battle River Alliance for Economic Development Ltd. (BRAED)
Allan Walkey, Manager
al.walkey@gov.ab.ca

Dale Beddoes, Client Services Representative
dale.beddoes@gov.ab.ca

5005 - 49 Street
Canrose, Alberta T4V 1N5
Tel: 780-679-1235
Fax: 780-679-1250

Ed Stelmach
Member of the Legislative Assembly [MLA]
Fort Saskatchewan-Vegreville Constituency
607 Legislature Annex
9718 107 Street
Edmonton AB T5K 1E4
Tel: 780-422-5384
Fax: 780-415-0951

Constituency Office:
Box 451
4945 - 51 Avenue
Vegreville AB T9C 1R6
Tel: 780-632-6840
Fax: 780-632-6888

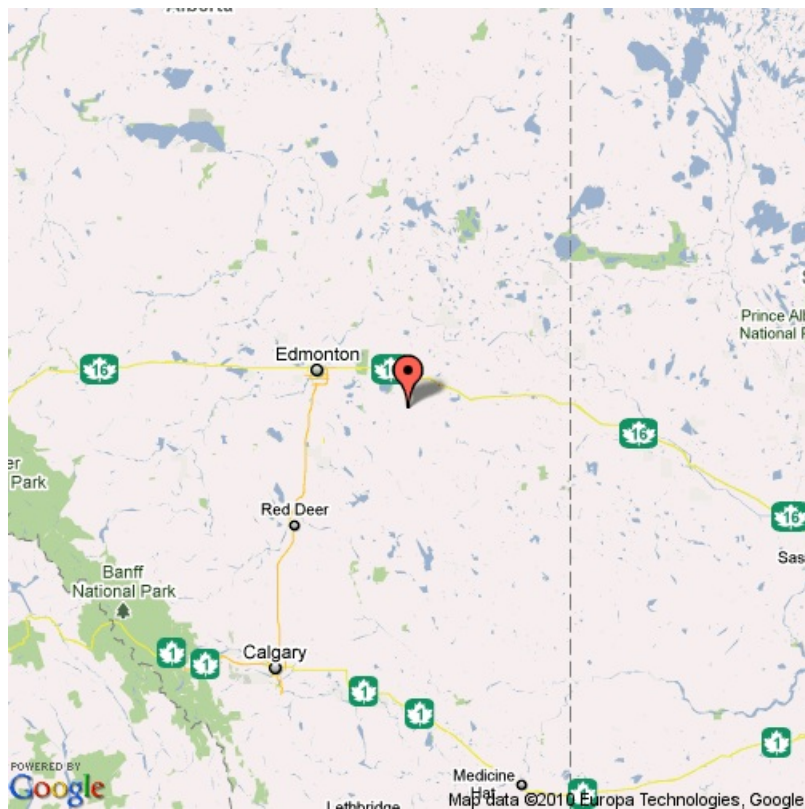
Federal (Updated June 2001)

Leon Benoit

Member of Parliament [MP]
Vegreville-Wainwright Constituency
House of Commons
Ottawa, Ontario K1A 0A6
Tel: 613-992-4171
Fax: 613-996-9011

Constituency Office:
5004 - 49th Street
Professional Building
P.O. Box 300
Mannville, Alberta T0B 2W0
Tel: 780-763-6130
Fax: 780-763-6132

Google Map



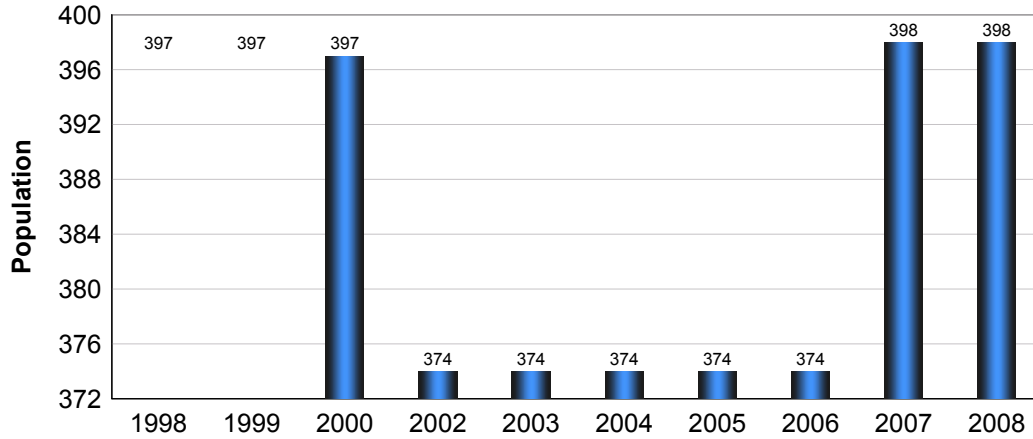
Disclaimer: Information in this profile has been provided from a variety of external sources. AlbertaFirst.com Ltd. provides this template, and each community posts their own content within the template. If you find inaccuracies or information you feel needs changing, please contact the community directly. Although every effort has been made to ensure the accuracy, currency and reliability of the content and data, AlbertaFirst.com Ltd. accepts no responsibility in this regard.

©AlbertaFirst.com Ltd., 2010.

A chart or table in this Profile may be blank. This will occur if there was no data available for that community for the specified time period

Municipal Population

Total Population - Holden

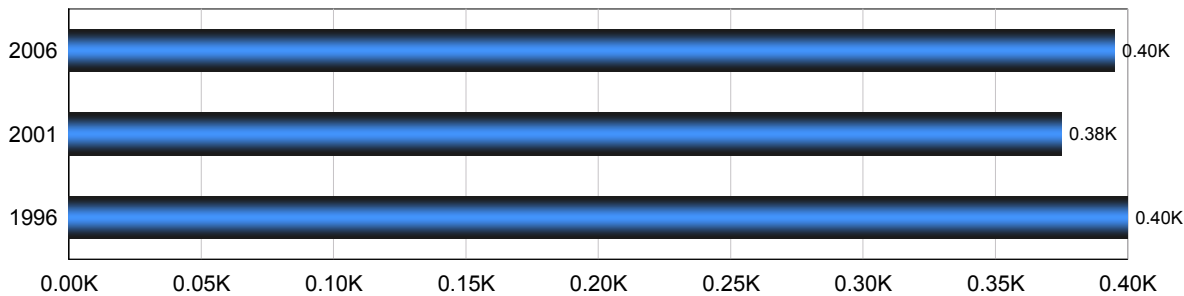


Year	Community Growth	Alberta Growth
2008	0.00%	2.37%
2007	6.42%	3.39%
2006	0.00%	1.95%
2005	0.00%	3.91%
2004	0.00%	0.95%
2003	0.00%	1.34%
2001	(5.79)%	4.02%
2000	0.00%	2.15%
1999	0.00%	3.24%
1998	0.00%	1.33%

Source: Statistics Canada 2007.
Holden, Alberta. 2006 Community Profiles. 2006 Census.
Statistics Canada Catalogue no. 92-591-XWE. Ottawa. Released March 13, 2007.

Population

Total Population - Holden

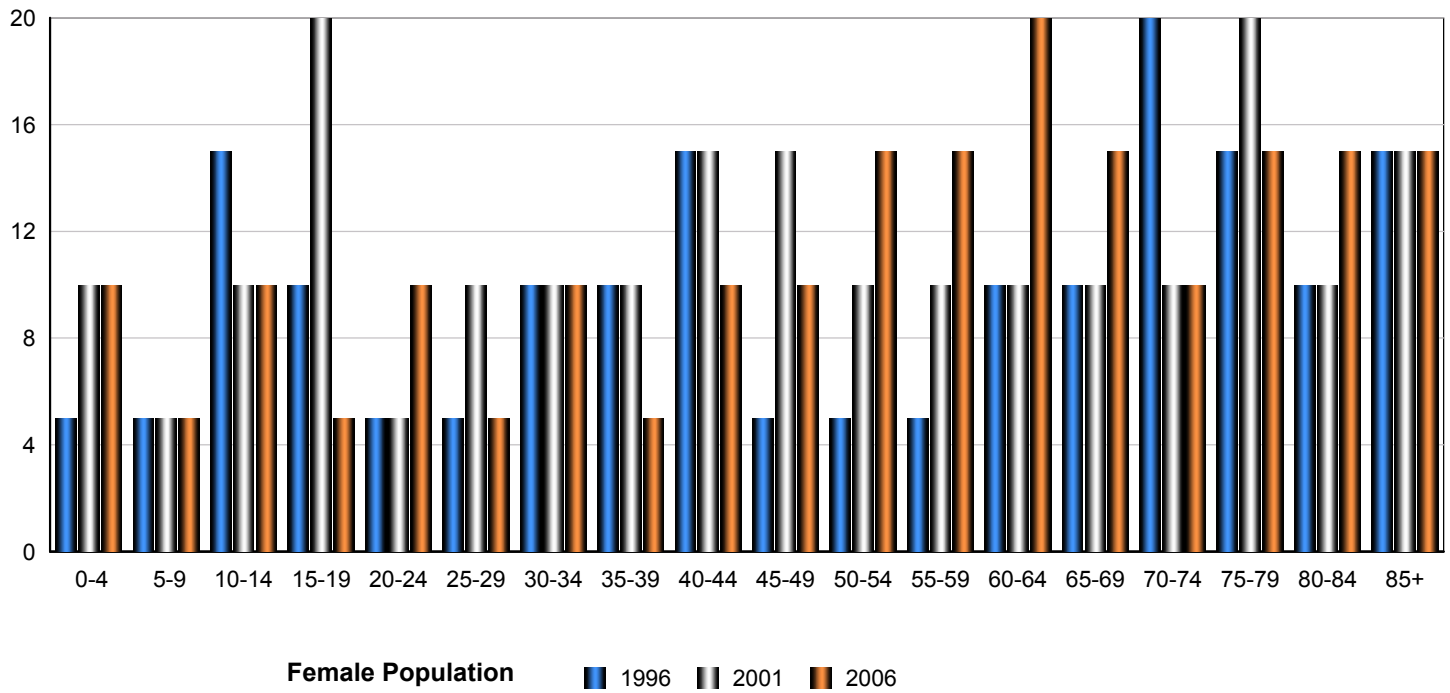


Census Year	Total Population	% Change
2006	395	6.40%
2001	375	5.80%
1996	400	3.40%

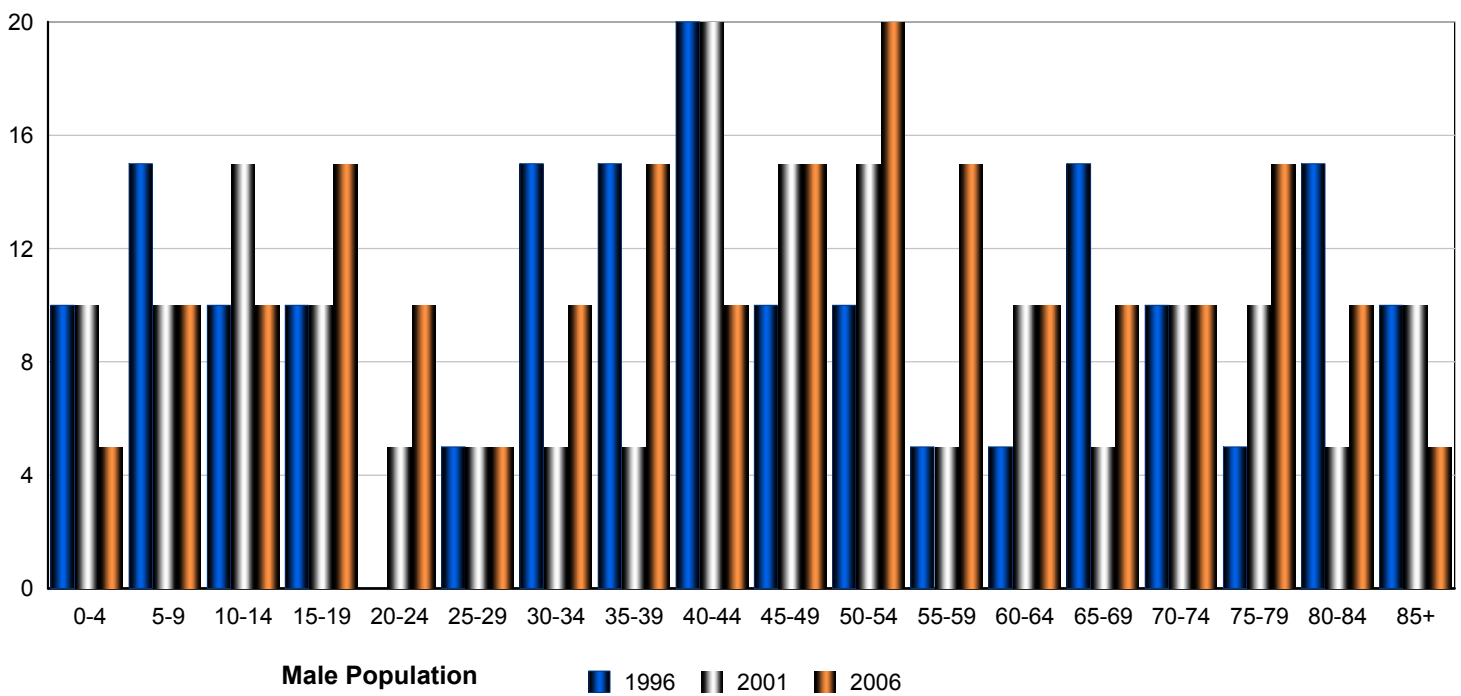
Source: Statistics Canada 2007.
Holden, Alberta. 2006 Community Profiles. 2006 Census.
Statistics Canada Catalogue no. 92-591-XWE. Ottawa. Released March 13, 2007.

Total Population by Gender and Age - Holden

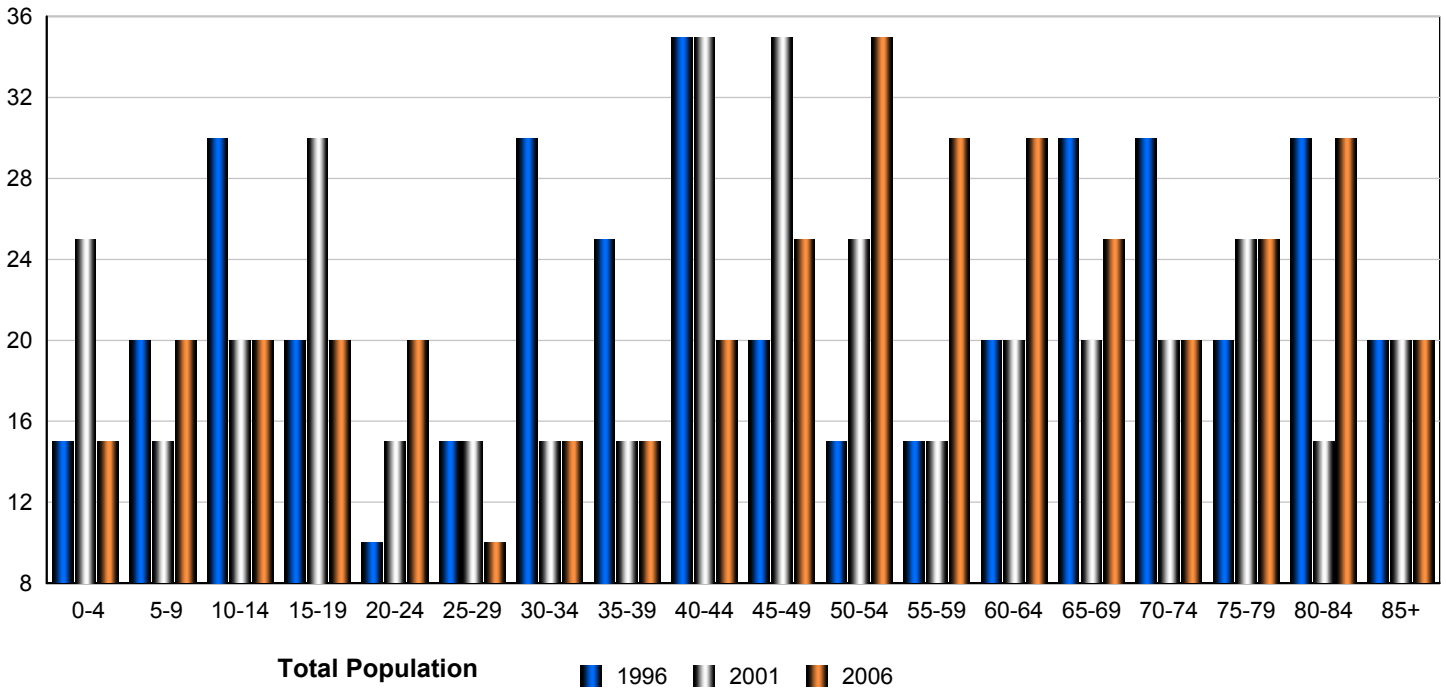
Census Population by Gender - Holden



Census Population by Gender - Holden



Census Population by Gender - Holden



	Male			Female			Total		
	2006	2001	1996	2006	2001	1996	2006	2001	1996
0-4	5	10	10	10	10	5	15	20	15
5-9	10	10	15	5	5	5	15	15	20
10-14	10	15	10	10	10	15	20	25	25
15-19	15	10	10	5	20	10	20	30	20
20-24	10	5	0	10	5	5	20	10	5
25-29	5	5	5	5	10	5	10	15	10
30-34	10	5	15	10	10	10	20	15	25
35-39	15	5	15	5	10	10	20	15	25
40-44	10	20	20	10	15	15	20	35	35
45-49	15	15	10	10	15	5	25	30	15
50-54	20	15	10	15	10	5	35	25	15
55-59	15	5	5	15	10	5	30	15	10
60-64	10	10	5	20	10	10	30	20	15
65-69	10	5	15	15	10	10	25	15	25
70-74	10	10	10	10	10	20	20	20	30
75-79	15	10	5	15	20	15	30	30	20
80-84	10	5	15	15	10	10	25	15	25
85-89	5	10	10	15	15	15	20	25	25
Total	200	170	185	200	205	175	400	375	360

Source: Statistics Canada 2007.
 Holden, Alberta. 2006 Community Profiles. 2006 Census.
 Statistics Canada Catalogue no. 92-591-XWE. Ottawa. Released March 13, 2007.

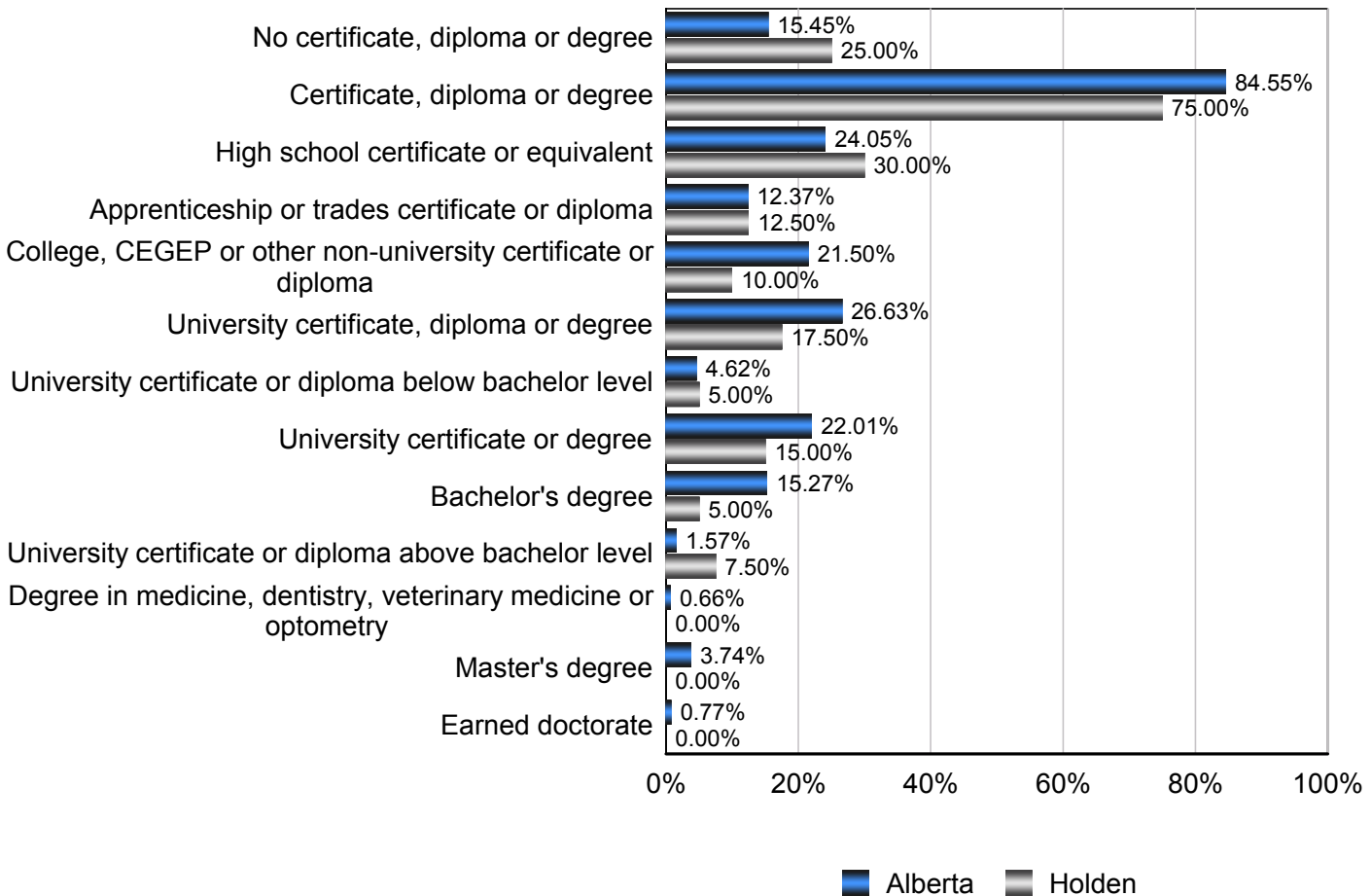
Education Statistics

Highest Level of Schooling, Population Aged 25-64 - Holden (2006)

% of Population Aged 25-64

Highest Level of Schooling	Holden	Alberta
No certificate, diploma or degree	25.00%	15.45%
Certificate, diploma or degree	75.00%	84.55%
High school certificate or equivalent	30.00%	24.05%
Apprenticeship or trades certificate or diploma	12.50%	12.37%
College, CEGEP or other non-university certificate or diploma	10.00%	21.50%
University certificate, diploma or degree	17.50%	26.63%
University certificate or diploma below bachelor level	5.00%	4.62%
University certificate or degree	15.00%	22.01%
Bachelor's degree	5.00%	15.27%
University certificate or diploma above bachelor level	7.50%	1.57%
Degree in medicine, dentistry, veterinary medicine or optometry	0.00%	0.66%
Master's degree	0.00%	3.74%
Earned doctorate	0.00%	0.77%

Amount by Which the Highest Level of Schooling - Holden vs Provincial Average (2006)

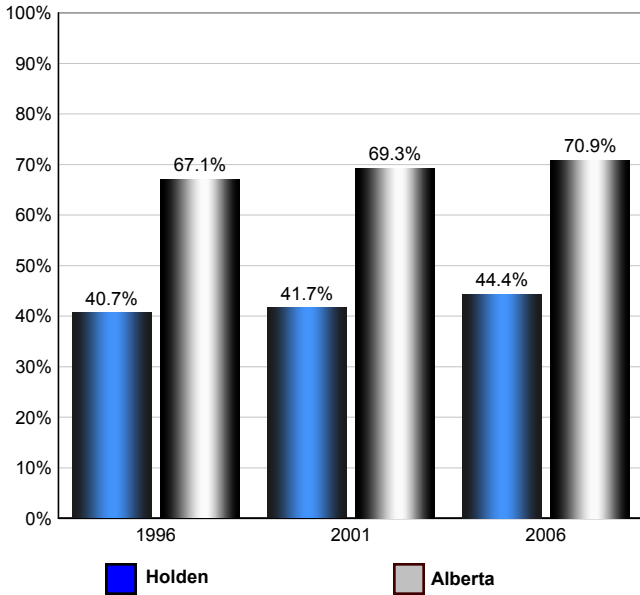


Source: Statistics Canada 2007.
 Alberta, Alberta. 2006 Community Profiles. 2006 Census.
 Statistics Canada Catalogue no. 92-591-XWE. Ottawa. Released March 13, 2007.

Labour Force

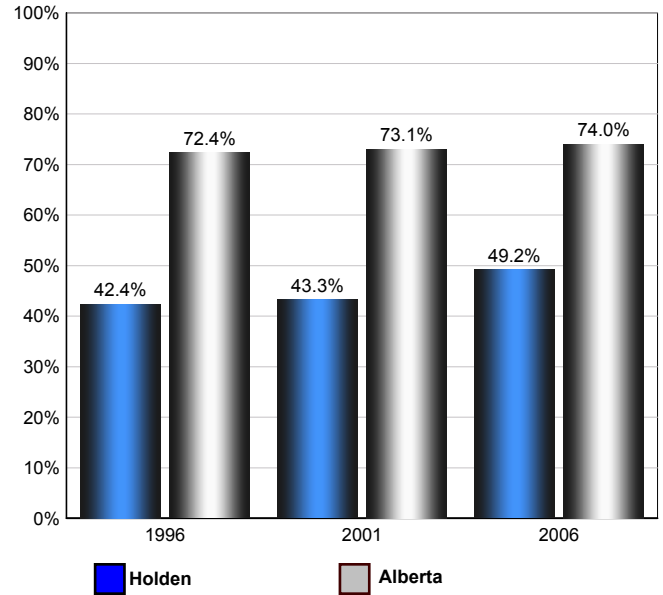
Annual Labour Force Activity Rates - Holden vs Alberta

Employment Rate



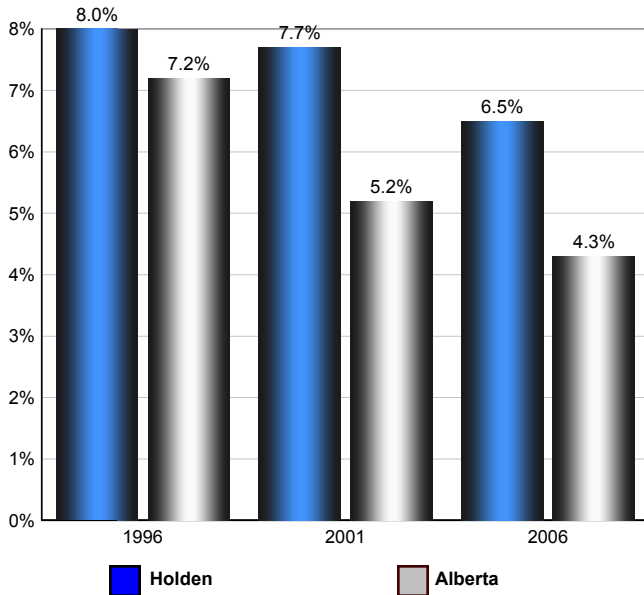
The Employment Rate is calculated by dividing the total employed by the total population 15 and over

Participation Rate



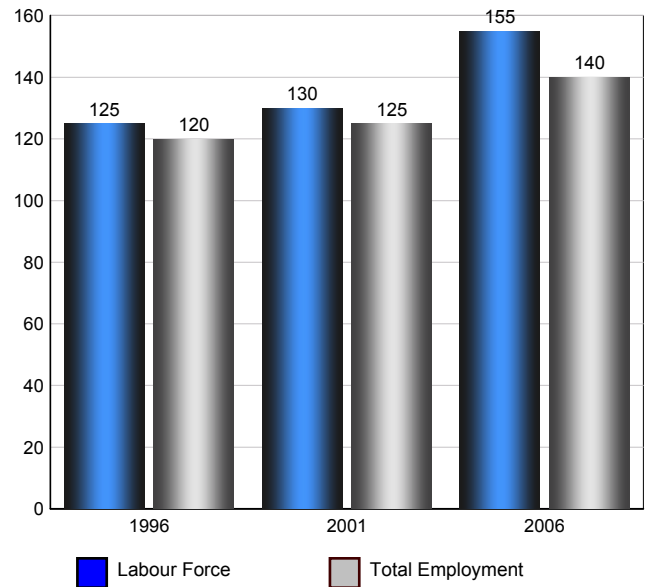
The Participation rate is calculated by summing together the number employed and unemployed and dividing the result by the total population aged 15 and over

Unemployment Rate



The Unemployment rate is calculated by dividing the total number of persons in the labour force that are reported as being unemployed by the total labour force.

Holden Labour Force and Total Employment (Age 15+)



Source: Statistics Canada 2007. Holden, Alberta. 2006 Community Profiles. 2006 Census. Statistics Canada Catalogue no. 92-591-XWE. Ottawa. Released March 13, 2007.

Labour Force Age 15+ - Holden (2006)

Industry by Gender

Industry	Males	Females	Total
Agriculture, Forestry, Fishing and Hunting	0	0	0
Mining, Oil and Gas Extraction	15	0	15
Utilities	0	0	0
Construction	10	0	10
Manufacturing	0	0	0
Wholesale Trade	0	10	10
Retail Trade	15	10	25
Transportation and Warehousing	0	10	10
Information and Cultural Industries	0	0	0
Finance and Insurance	0	0	0
Real Estate, Rental and Leasing	0	0	0
Professional, Scientific and Technical Services	0	0	0
Management of Companies and Enterprises	0	0	0
Administrative and Support, Waste Management and Remediation Services	0	0	0
Educational services	10	10	20
Health care and social assistance	0	10	10
Arts, Entertainment and Recreation	15	0	15
Accommodation and Food Services	0	10	10
Other Services (except Public Administration)	15	0	15
Public Administration	0	10	10
Total	80	70	150

Source: Statistics Canada 2007.
Holden, Alberta. 2006 Community Profiles. 2006 Census.
Statistics Canada Catalogue no. 92-591-XWE. Ottawa. Released March 13, 2007.

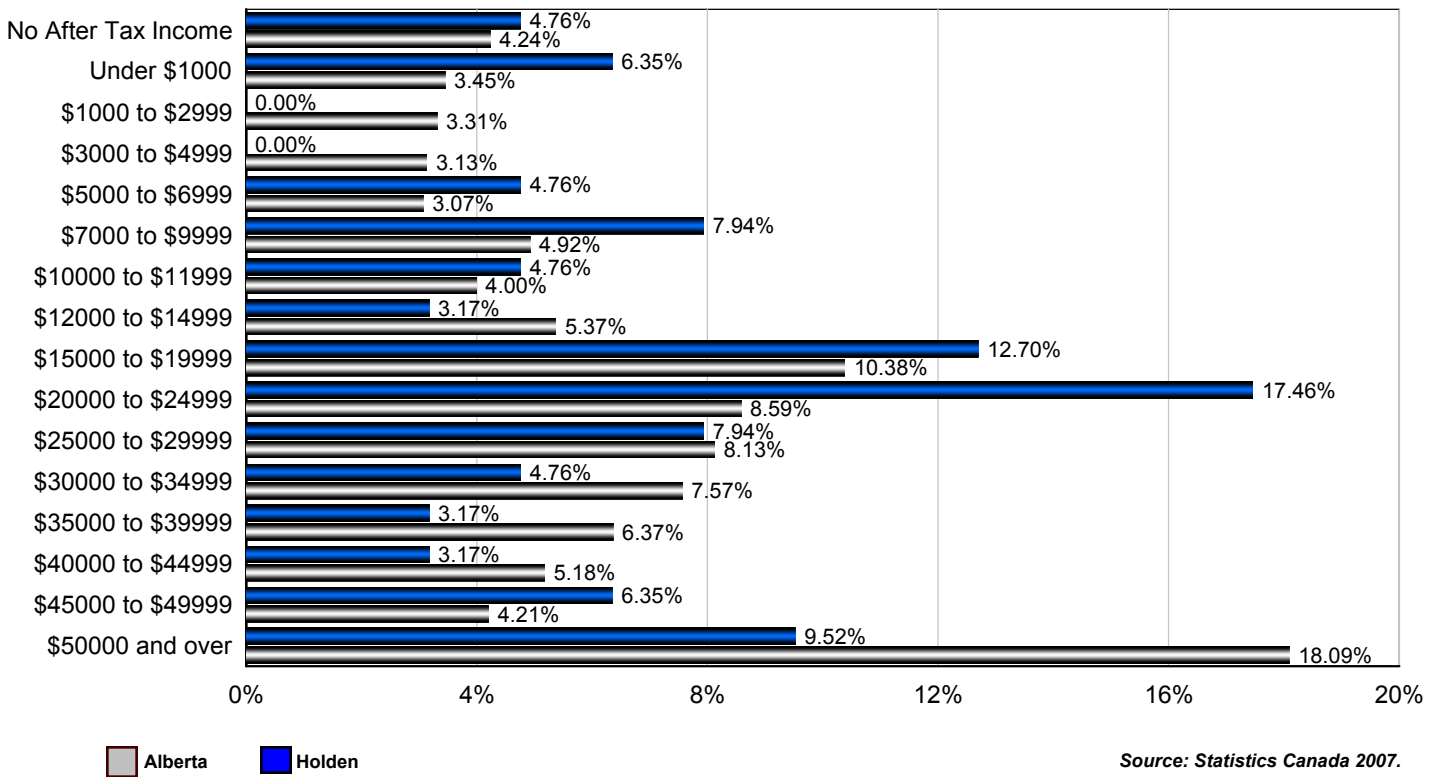
Occupation by Gender

Occupation	Males	Females	Total
Management Occupations	10	10	20
Business, Finance and Administration Occupations	10	20	30
Natural and Applied Sciences and Related Occupations	0	10	10
Health Occupations	0	0	0
Occupations in Social Science, Education, Government Service	0	10	10
Occupations in Art, Culture, Recreation and Sport	0	0	0
Sales and Service Occupations	25	20	45
Trades, Transport and Equipment Operators and Related Occupations	40	0	40
Occupations Unique to Primary	0	10	10
Occupations Unique to Processing, Manufacturing and Utilities	10	0	10
Total	95	80	175

Source: Statistics Canada 2007.
Holden, Alberta. 2006 Community Profiles. 2006 Census.
Statistics Canada Catalogue no. 92-591-XWE. Ottawa. Released March 13, 2007.

Income

Percent of Population 15+ by Income Bracket - Holden vs Alberta (2005)



Source: Statistics Canada 2007.
Holden, Alberta. 2006 Community Profiles. 2006 Census.
Statistics Canada Catalogue no. 92-591-XWE. Ottawa. Released March 13, 2007.

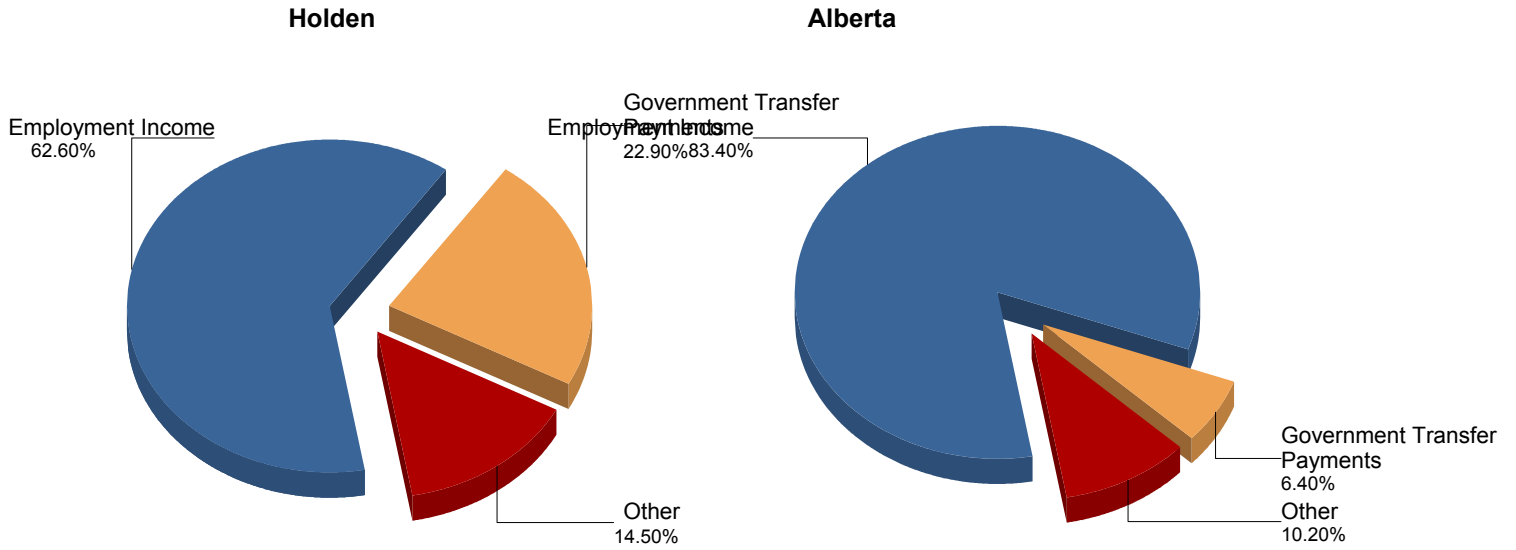
Population 15+ by Total After Tax Income - Holden (2005)

	Males	Females	Total
Without After-Tax Income	10	10	20
Under \$1,000	10	15	25
\$1,000 to \$2,999	0	10	10
\$3,000 to \$4,999	0	0	0
\$5,000 to \$6,999	10	10	20
\$7,000 to \$9,999	10	20	30
\$10,000 to \$11,999	0	15	15
\$12,000 to \$14,999	10	10	20
\$15,000 to \$19,999	15	25	40
\$20,000 to \$24,999	40	15	55
\$25,000 to \$29,999	20	0	20
\$30,000 to \$34,999	0	10	10
\$35,000 to \$39,999	0	10	10
\$40,000 to \$44,999	0	0	0
\$45,000 to \$49,999	15	10	25
\$50,000 and over	20	10	30
Total	160	160	315

Due to rounding consolidating the shown income brackets may lead to errors. Such errors would be most pronounced for small communities.

Source: Statistics Canada 2007.
Holden, Alberta. 2006 Community Profiles. 2006 Census.
Statistics Canada Catalogue no. 92-591-XWE. Ottawa. Released March 13, 2007.

Composition of Family Income for Economic Families - Holden vs Alberta (2005)



Economic family total income - The total income of an economic family is the sum of the total incomes of all members of that family.

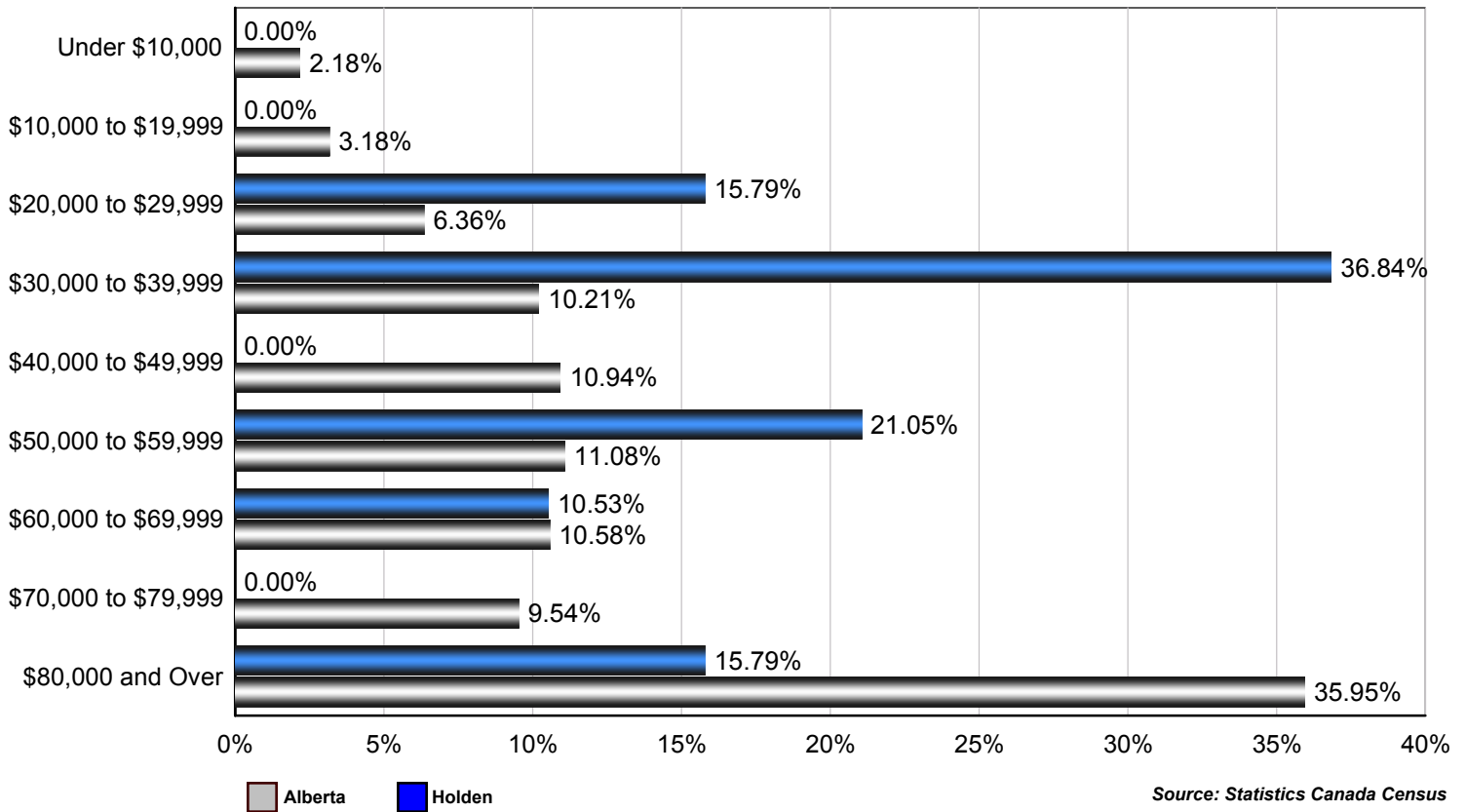
Source: Statistics Canada 2007.
Holden, Alberta. 2006 Community Profiles. 2006 Census.
Statistics Canada Catalogue no. 92-591-XWE. Ottawa. Released March 13, 2007.

Population 15+ With Employment Earnings - Holden (2005)

	Males	Females	Total
Earnings - As a % of total Earnings	77%	53%	63%
Median Employment Earnings	\$11,064	\$22,555	\$13,558
Average Employment Earnings	\$25,866	\$25,140	\$25,566

Source: Statistics Canada 2007.
Holden, Alberta. 2006 Community Profiles. 2006 Census.
Statistics Canada Catalogue no. 92-591-XWE. Ottawa. Released March 13, 2007.

Percent of Total Economic Families by After-tax Income Brackets - Holden vs Alberta (2005)



Number of Economic Families by After-tax Income Brackets - Holden (2005)

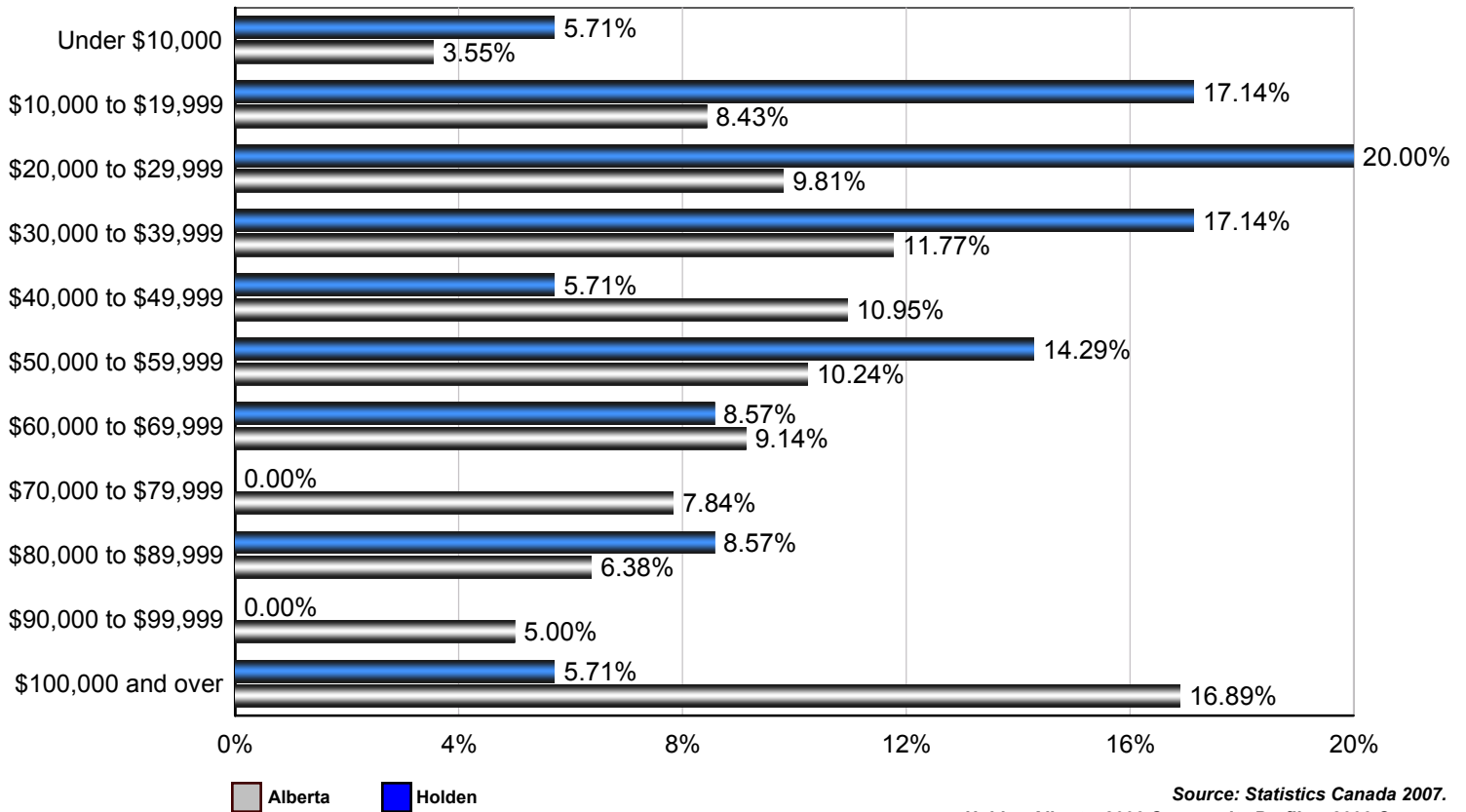
Income Bracket	Number of Families
Under \$10,000	0
\$10,000 to \$19,999	0
\$20,000 to \$29,999	15
\$30,000 to \$39,999	35
\$40,000 to \$49,999	0
\$50,000 to \$59,999	20
\$60,000 to \$69,999	10
\$70,000 to \$79,999	0
\$80,000 and over	15
Total	95

Family Income	
Median After-Tax Family Income	\$35,181
Average After-Tax Family Income	\$55,270

Due to rounding consolidating the shown income brackets may lead to errors. Such errors would be most pronounced for small communities.

Source: Statistics Canada 2007.
 Holden, Alberta. 2006 Community Profiles. 2006 Census.
 Statistics Canada Catalogue no. 92-591-XWE. Ottawa. Released March 13, 2007.

Percent of Total Private Households by After-tax Income Brackets - Holden vs Alberta (2005)



Source: Statistics Canada 2007.
Holden, Alberta. 2006 Community Profiles. 2006 Census.
Statistics Canada Catalogue no. 92-591-XWE. Ottawa. Released March 13, 2007.

Number of Private Households by After-tax Income Brackets - Holden (2005)

Income Bracket	Number of Families
Under \$10,000	10
\$10,000 to \$19,999	30
\$20,000 to \$29,999	35
\$30,000 to \$39,999	30
\$40,000 to \$49,999	10
\$50,000 to \$59,999	25
\$60,000 to \$69,999	15
\$70,000 to \$79,999	0
\$80,000 to \$89,999	15
\$90,000 to \$99,999	0
\$100,000 and Over	10
Total	175

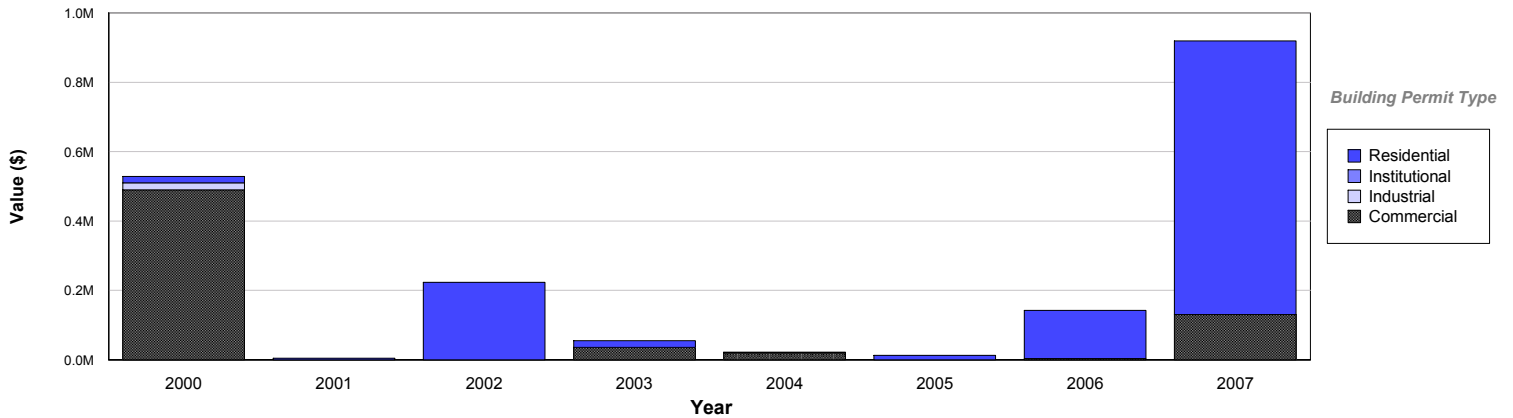
Family Income	
Median After-Tax Family Income	\$34,216
Average After-Tax Family Income	\$44,801

Due to rounding consolidating the shown income brackets may lead to errors. Such errors would be most pronounced for small communities.

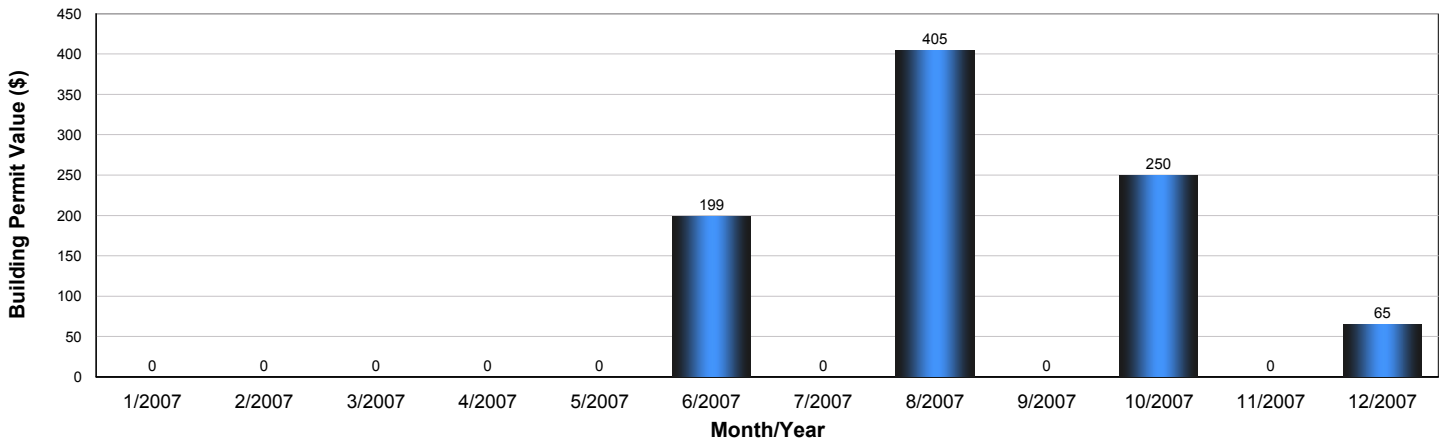
Source: Statistics Canada Census

Building Permits

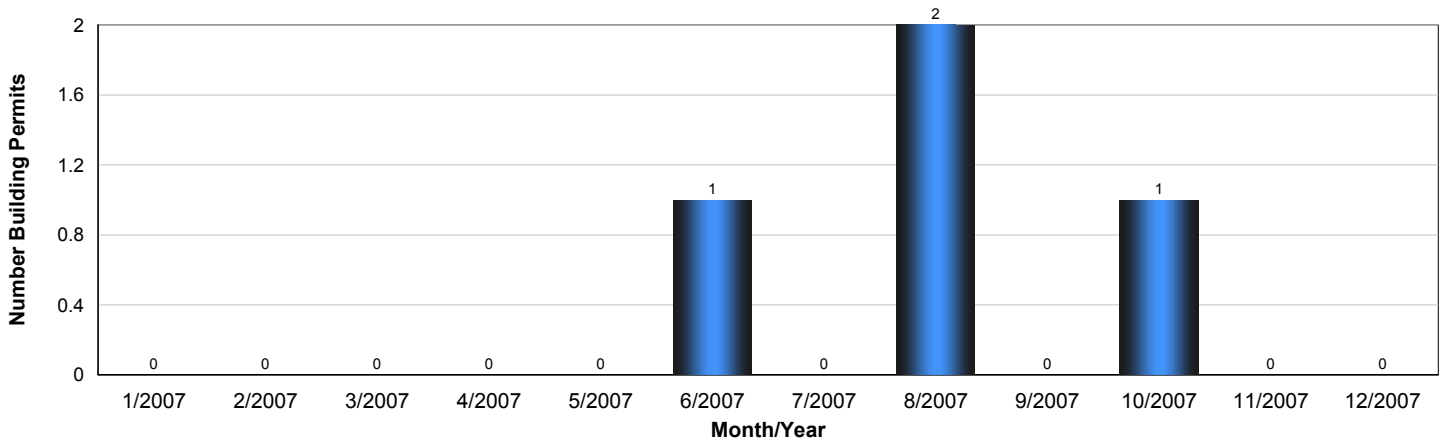
Value of Building Permits - Holden



Year	Residential	Industrial	Commercial	Institutional	Total
2007	\$789,000	\$0	\$130,000	\$0	\$919,000
2006	\$139,000	\$0	\$3,000	\$0	\$142,000
2005	\$13,000	\$0	\$0	\$0	\$13,000
2004	\$2,000	\$0	\$20,000	\$0	\$22,000
2003	\$19,000	\$0	\$36,000	\$0	\$55,000
2002	\$223,000	\$0	\$0	\$0	\$223,000
2001	\$4,000	\$0	\$0	\$0	\$4,000
2000	\$19,000	\$20,000	\$490,000	\$0	\$529,000



Number of Building Permits - Holden

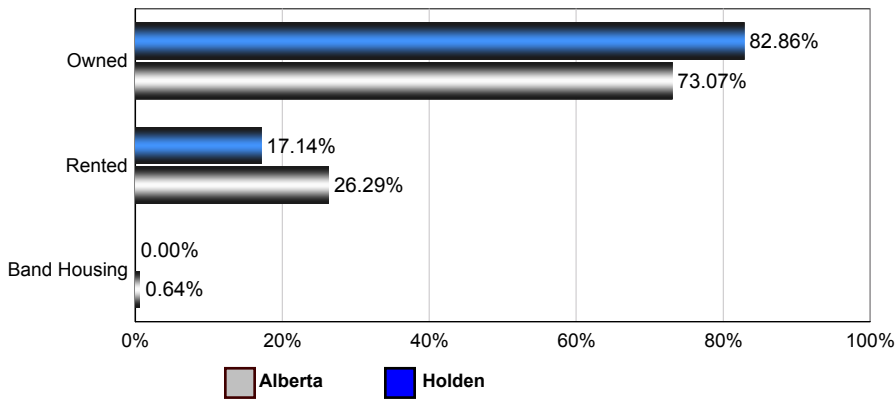


Source: Statistics Canada, Building Permits / Permis de bâtir, Publication 64-001-XWF, 2000 - 2009.

Dwellings

Number of Occupied Private Dwellings by Ownership - Holden

Holden vs Alberta (2006)



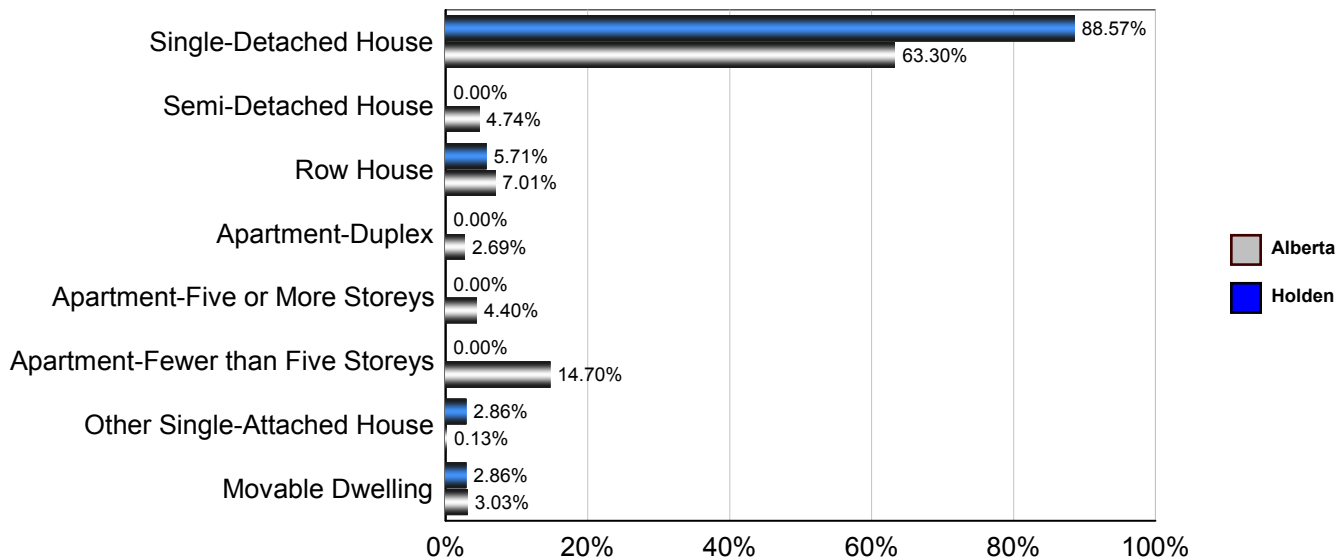
Holden

	1996	2001	2006
Owned	135	165	145
Rented	35	10	30
Band Housing	0	0	0
Total	170	175	175

Source: Statistics Canada 2007. Holden, Alberta. 2006 Community Profiles. 2006 Census. Statistics Canada Catalogue no. 92-591-XWE. Ottawa. Released March 13, 2007.

Number of Occupied Private Dwellings by Structural Type - Holden

Holden vs Alberta (2006)



Holden

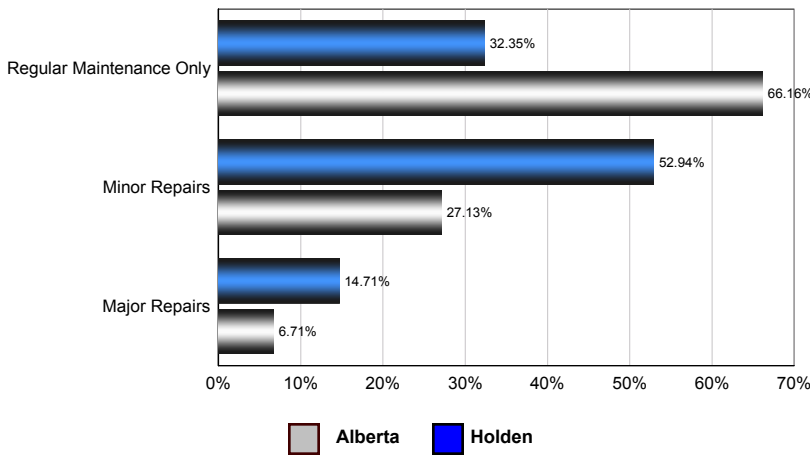
	1996	2001	2006
Single-Detached House	155	165	155
Semi-Detached House	0	0	0
Row House	0	0	0
Apartment - Duplex	0	0	0
Apartment - Five or More Storeys	0	0	0
Apartment - Fewer than Five Storeys	0	0	0
Other Single-Attached House	0	0	0
Movable Dwelling	15	0	5
Total	170	165	160

Source: Statistics Canada 2007. Holden, Alberta. 2006 Community Profiles. 2006 Census. Statistics Canada Catalogue no. 92-591-XWE. Ottawa. Released March 13, 2007.

Number of Occupied Private Dwellings by the Condition of Dwelling - Holden

Holden vs Alberta (2006)

Holden



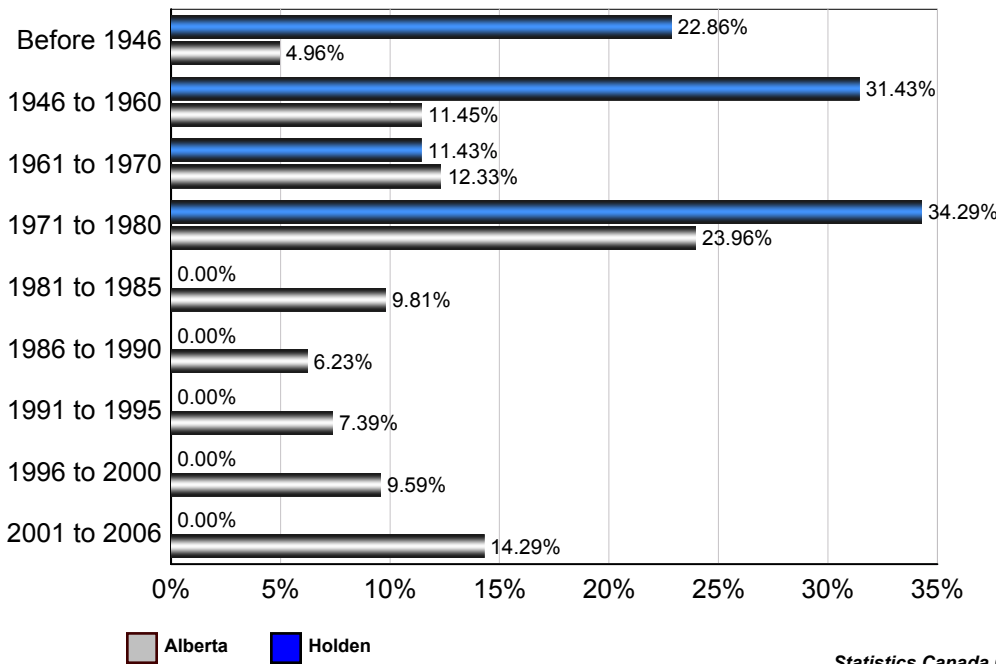
	1996	2001	2006
Regular Maintenance Only	95	80	55
Minor repairs	70	80	90
Major repairs	0	10	25
Total	165	170	170

Source: Statistics Canada 2007.
Holden, Alberta. 2006 Community Profiles. 2006 Census.
Statistics Canada Catalogue no. 92-591-XWE. Ottawa. Released March 13, 2007.

Number of Occupied Private Dwellings by Period of Construction - Holden

Holden vs Alberta (2006)

Holden



	2006
Before 1946	40
1946 to 1960	55
1961 to 1970	20
1971 to 1980	60
1981 to 1985	0
1986 to 1990	0
1991 to 1995	0
1996 to 2000	0
2001 to 2006	0
Total	175

Source: Statistics Canada 2007.
Holden, Alberta. 2006 Community Profiles. 2006 Census.
Statistics Canada Catalogue no. 92-591-XWE. Ottawa. Released March 13, 2007.

