

Irma

Google Map



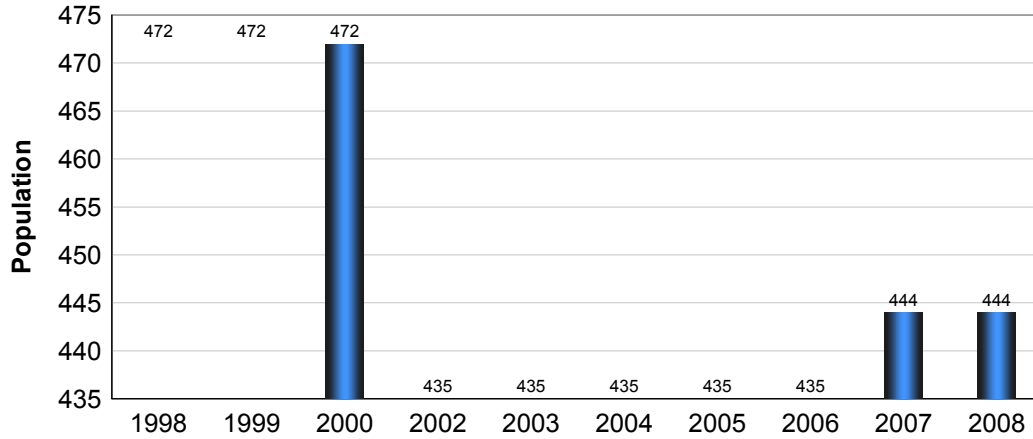
Disclaimer: Information in this profile has been provided from a variety of external sources. AlbertaFirst.com Ltd. provides this template, and each community posts their own content within the template. If you find inaccuracies or information you feel needs changing, please contact the community directly. Although every effort has been made to ensure the accuracy, currency and reliability of the content and data, AlbertaFirst.com Ltd. accepts no responsibility in this regard.

©AlbertaFirst.com Ltd., 2010.

A chart or table in this Profile may be blank. This will occur if there was no data available for that community for the specified time period

Municipal Population

Total Population - Irma

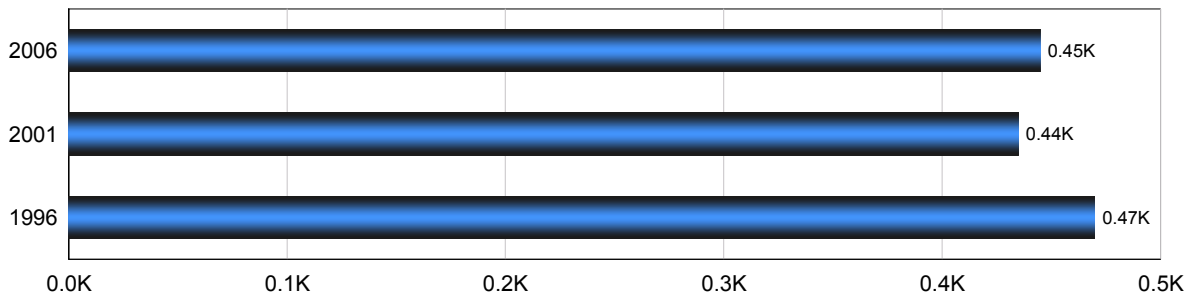


Year	Community Growth	Alberta Growth
2008	0.00%	2.37%
2007	2.07%	3.39%
2006	0.00%	1.95%
2005	0.00%	3.91%
2004	0.00%	0.95%
2003	0.00%	1.34%
2001	(7.84)%	4.02%
2000	0.00%	2.15%
1999	0.00%	3.24%
1998	0.00%	1.33%

Source: Statistics Canada 2007.
Irma, Alberta. 2006 Community Profiles. 2006 Census.
Statistics Canada Catalogue no. 92-591-XWE. Ottawa. Released March 13, 2007.

Population

Total Population - Irma

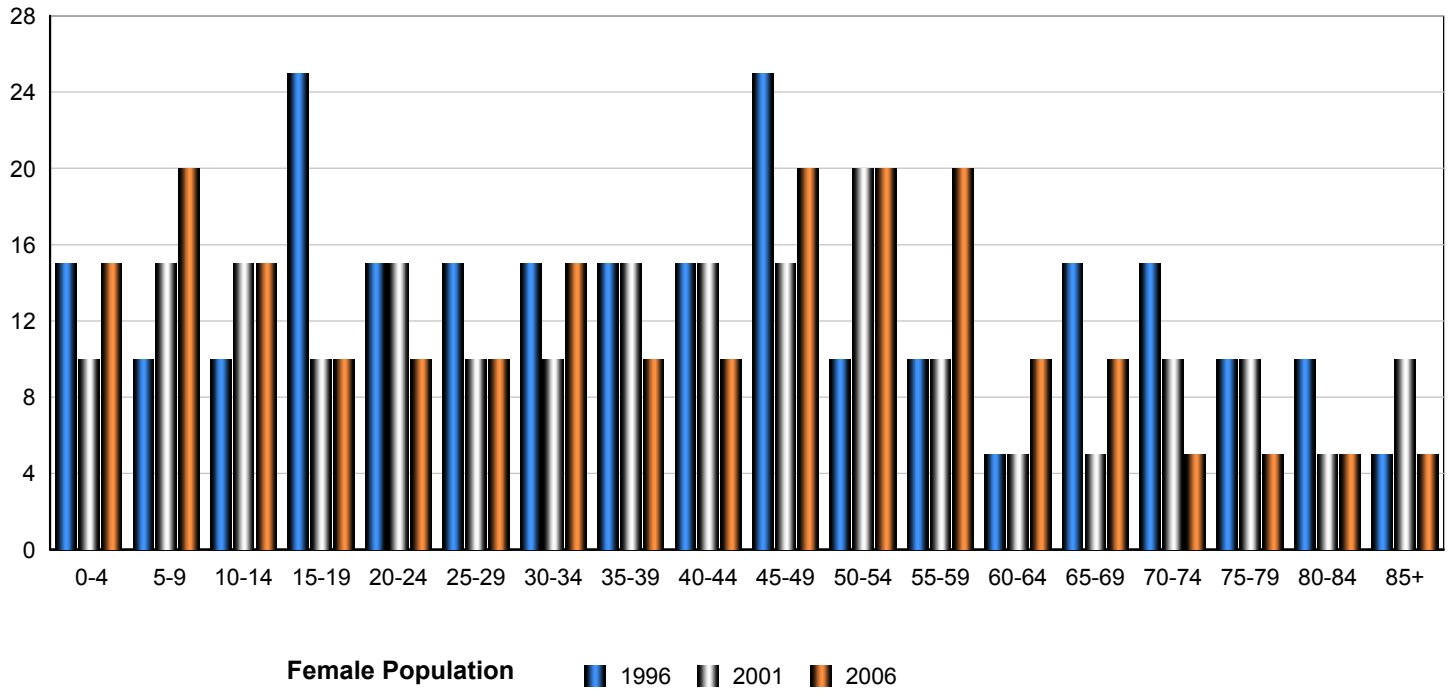


Census Year	Total Population	% Change
2006	445	2.10%
2001	435	7.80%
1996	470	6.80%

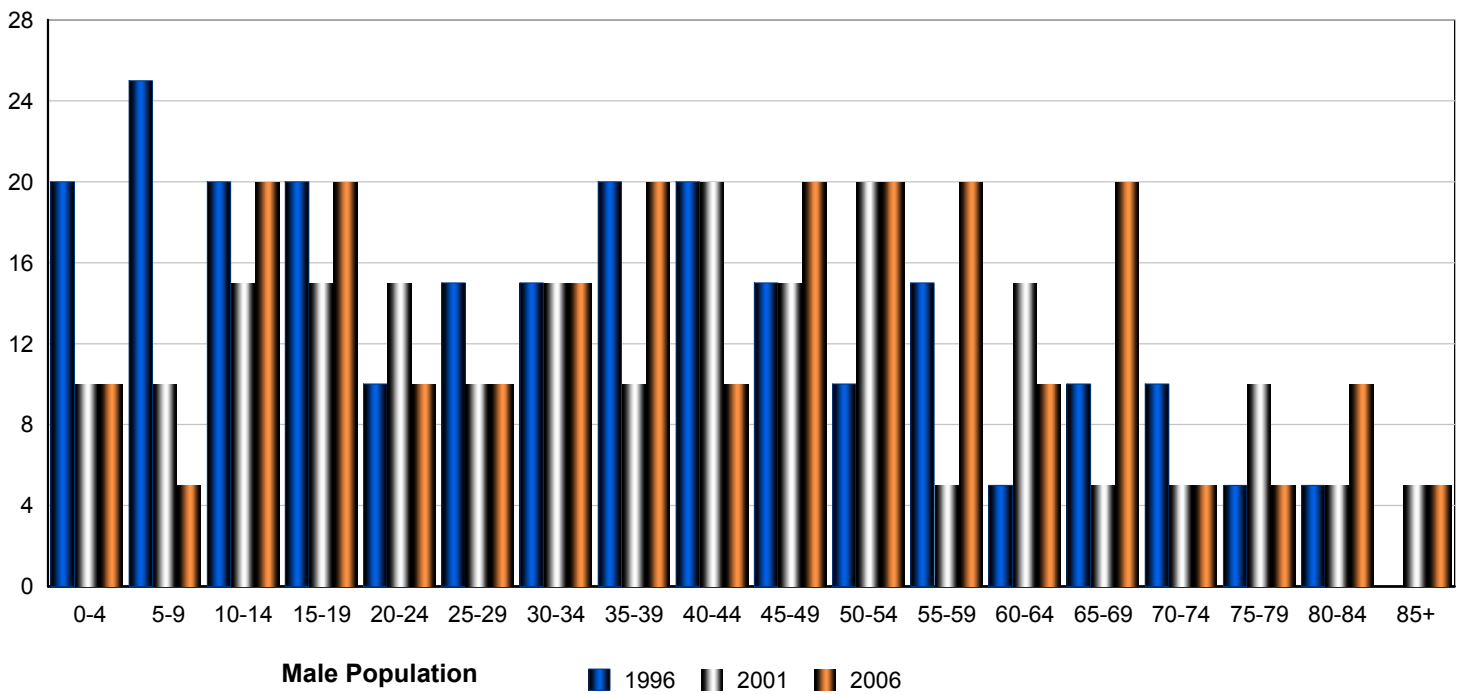
Source: Statistics Canada 2007.
Irma, Alberta. 2006 Community Profiles. 2006 Census.
Statistics Canada Catalogue no. 92-591-XWE. Ottawa. Released March 13, 2007.

Total Population by Gender and Age - Irma

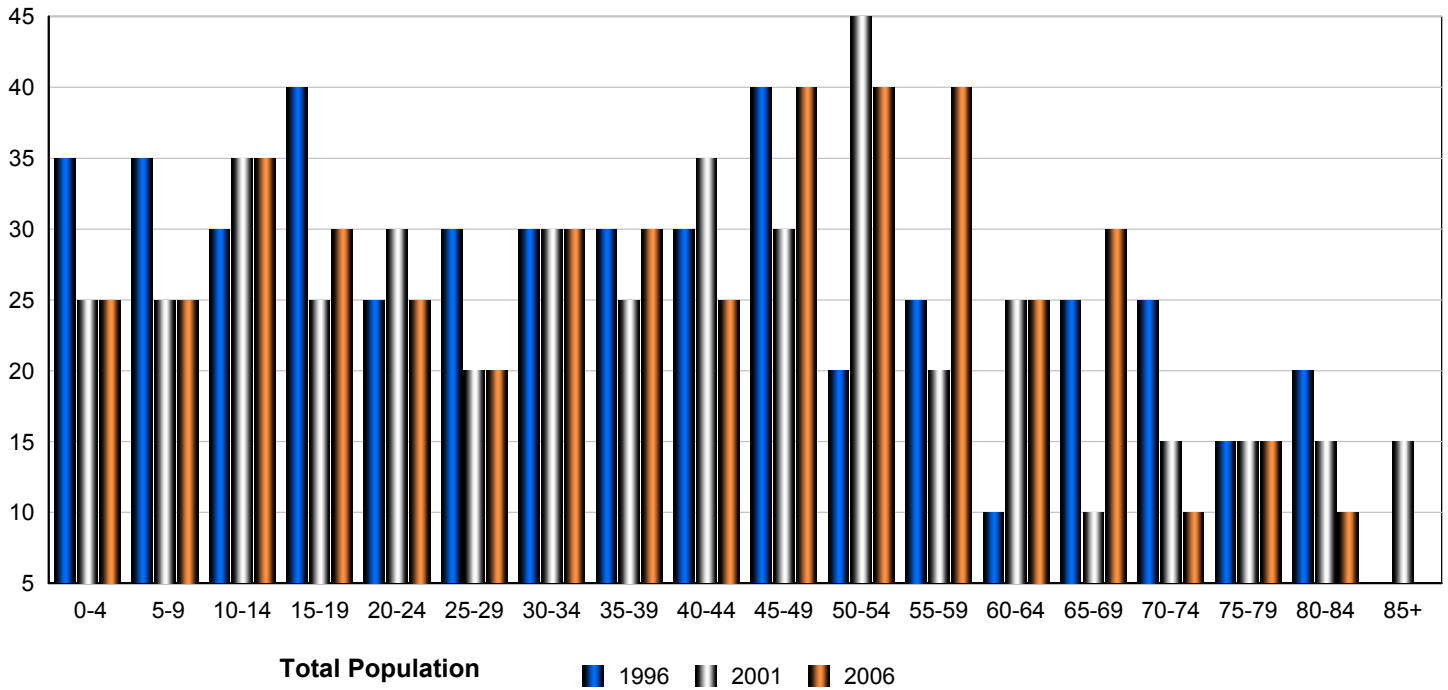
Census Population by Gender - Irma



Census Population by Gender - Irma



Census Population by Gender - Irma



	Male			Female			Total		
	2006	2001	1996	2006	2001	1996	2006	2001	1996
0-4	10	10	20	15	10	15	25	20	35
5-9	5	10	25	20	15	10	25	25	35
10-14	20	15	20	15	15	10	35	30	30
15-19	20	15	20	10	10	25	30	25	45
20-24	10	15	10	10	15	15	20	30	25
25-29	10	10	15	10	10	15	20	20	30
30-34	15	15	15	15	10	15	30	25	30
35-39	20	10	20	10	15	15	30	25	35
40-44	10	20	20	10	15	15	20	35	35
45-49	20	15	15	20	15	25	40	30	40
50-54	20	20	10	20	20	10	40	40	20
55-59	20	5	15	20	10	10	40	15	25
60-64	10	15	5	10	5	5	20	20	10
65-69	20	5	10	10	5	15	30	10	25
70-74	5	5	10	5	10	15	10	15	25
75-79	5	10	5	5	10	10	10	20	15
80-84	10	5	5	5	5	10	15	10	15
85-89	5	5	0	5	10	5	10	15	5
Total	235	205	240	215	205	240	450	410	480

Source: Statistics Canada 2007.
 Irma, Alberta. 2006 Community Profiles. 2006 Census.
 Statistics Canada Catalogue no. 92-591-XWE. Ottawa. Released March 13, 2007.

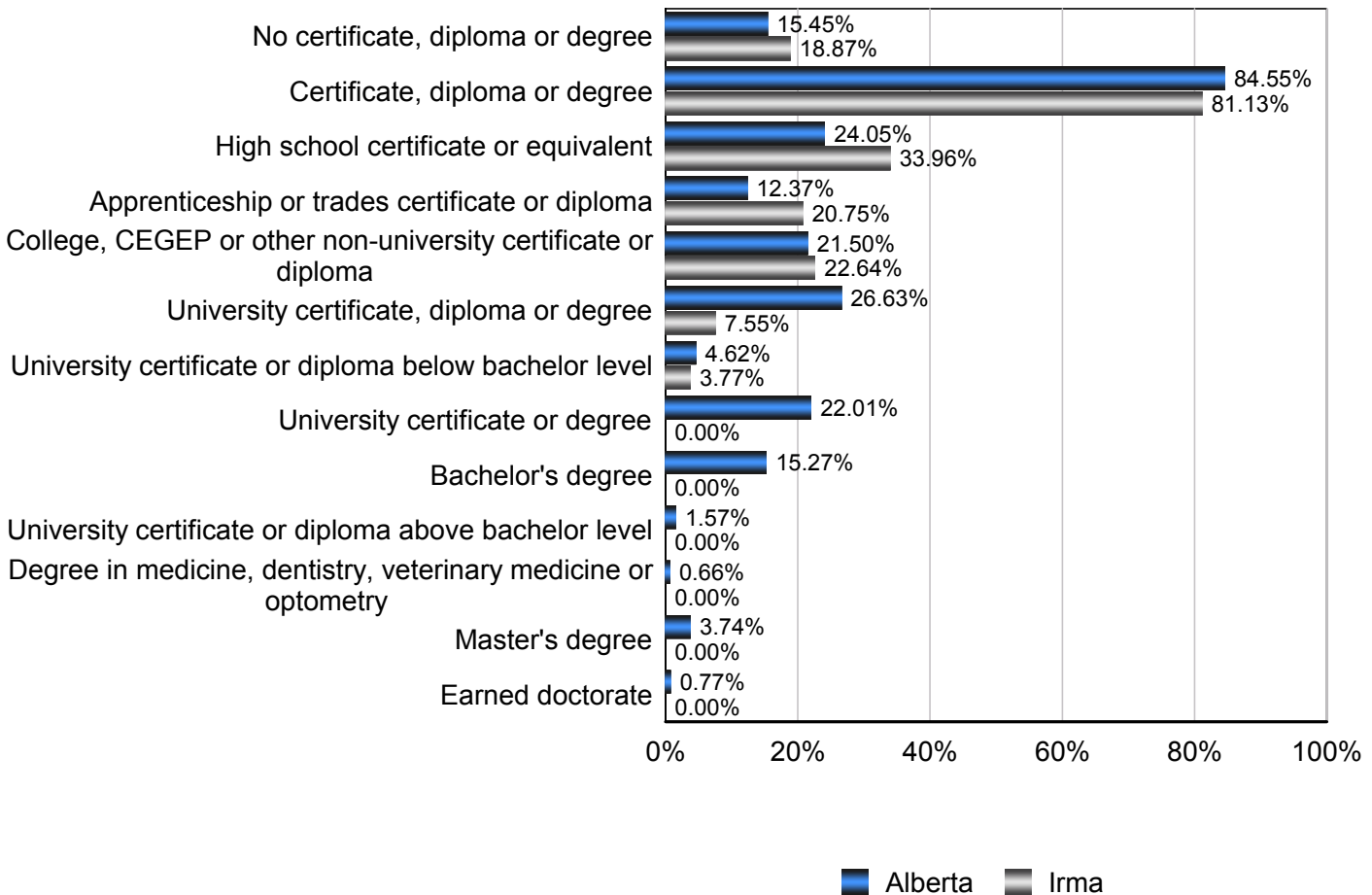
Education Statistics

Highest Level of Schooling, Population Aged 25-64 - Irma (2006)

% of Population Aged 25-64

Highest Level of Schooling	Irma	Alberta
No certificate, diploma or degree	18.87%	15.45%
Certificate, diploma or degree	81.13%	84.55%
High school certificate or equivalent	33.96%	24.05%
Apprenticeship or trades certificate or diploma	20.75%	12.37%
College, CEGEP or other non-university certificate or diploma	22.64%	21.50%
University certificate, diploma or degree	7.55%	26.63%
University certificate or diploma below bachelor level	3.77%	4.62%
University certificate or degree	0.00%	22.01%
Bachelor's degree	0.00%	15.27%
University certificate or diploma above bachelor level	0.00%	1.57%
Degree in medicine, dentistry, veterinary medicine or optometry	0.00%	0.66%
Master's degree	0.00%	3.74%
Earned doctorate	0.00%	0.77%

Amount by Which the Highest Level of Schooling - Irma vs Provincial Average (2006)

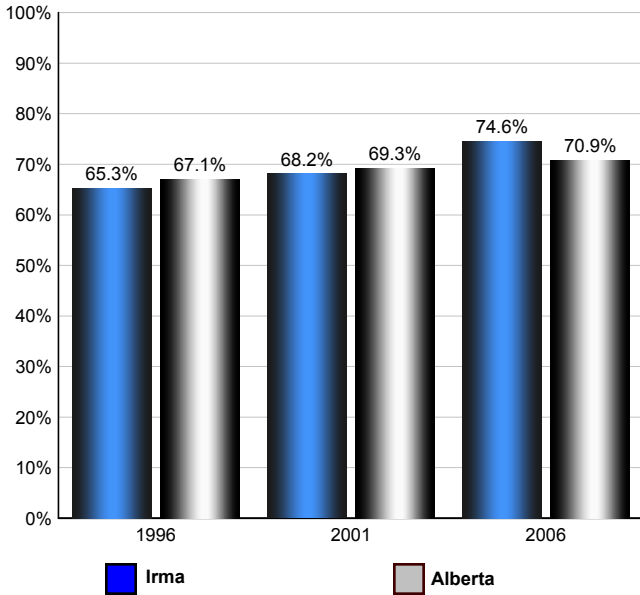


Source: Statistics Canada 2007.
 Alberta, Alberta. 2006 Community Profiles. 2006 Census.
 Statistics Canada Catalogue no. 92-591-XWE. Ottawa. Released March 13, 2007.

Labour Force

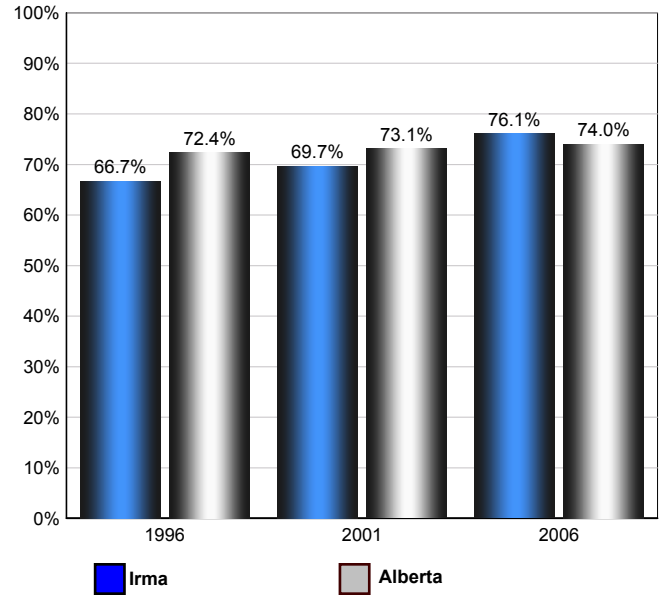
Annual Labour Force Activity Rates - Irma vs Alberta

Employment Rate



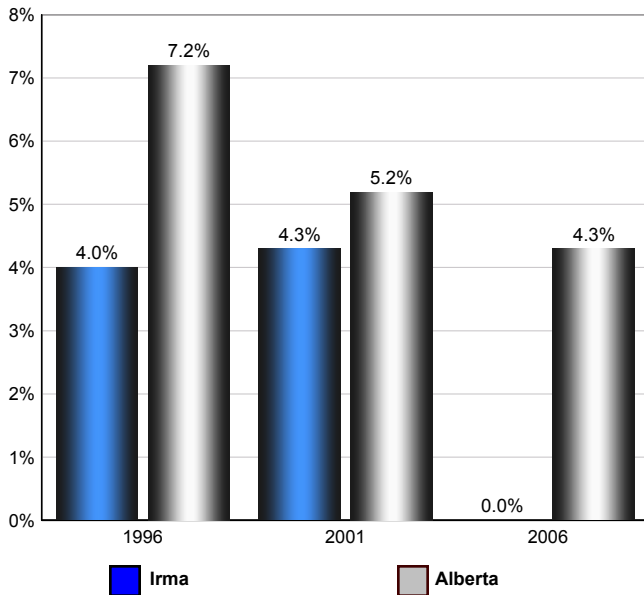
Employment Rate is calculated by dividing the total employed by the total population 15 and over

Participation Rate



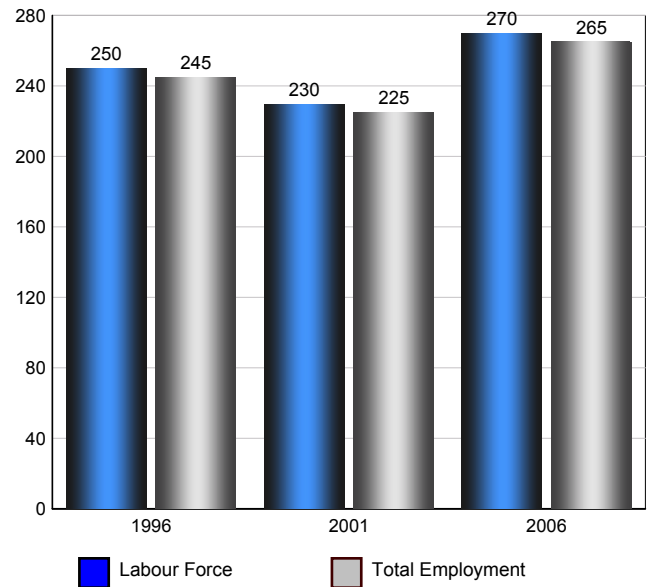
The Participation rate is calculated by summing together the number employed and unemployed and dividing the result by the total population aged 15 and over

Unemployment Rate



The Unemployment rate is calculated by dividing the total number of persons in the labour force that are reported as being unemployed by the total labour force.

Irma Labour Force and Total Employment (Age 15+)



Source: Statistics Canada 2007. Irma, Alberta. 2006 Community Profiles. 2006 Census. Statistics Canada Catalogue no. 92-591-XWE. Ottawa. Released March 13, 2007.

Labour Force Age 15+ - Irma (2006)

Industry by Gender

Industry	Males	Females	Total
Agriculture, Forestry, Fishing and Hunting	15	0	15
Mining, Oil and Gas Extraction	45	0	45
Utilities	0	0	0
Construction	25	0	25
Manufacturing	0	0	0
Wholesale Trade	10	10	20
Retail Trade	0	10	10
Transportation and Warehousing	0	20	20
Information and Cultural Industries	0	0	0
Finance and Insurance	0	0	0
Real Estate, Rental and Leasing	0	0	0
Professional, Scientific and Technical Services	0	0	0
Management of Companies and Enterprises	0	0	0
Administrative and Support, Waste Management and Remediation Services	0	0	0
Educational services	0	10	10
Health care and social assistance	0	15	15
Arts, Entertainment and Recreation	0	10	10
Accommodation and Food Services	0	25	25
Other Services (except Public Administration)	10	10	20
Public Administration	25	10	35
Total	130	120	250

Source: Statistics Canada 2007.
Irma, Alberta. 2006 Community Profiles. 2006 Census.
Statistics Canada Catalogue no. 92-591-XWE. Ottawa. Released March 13, 2007.

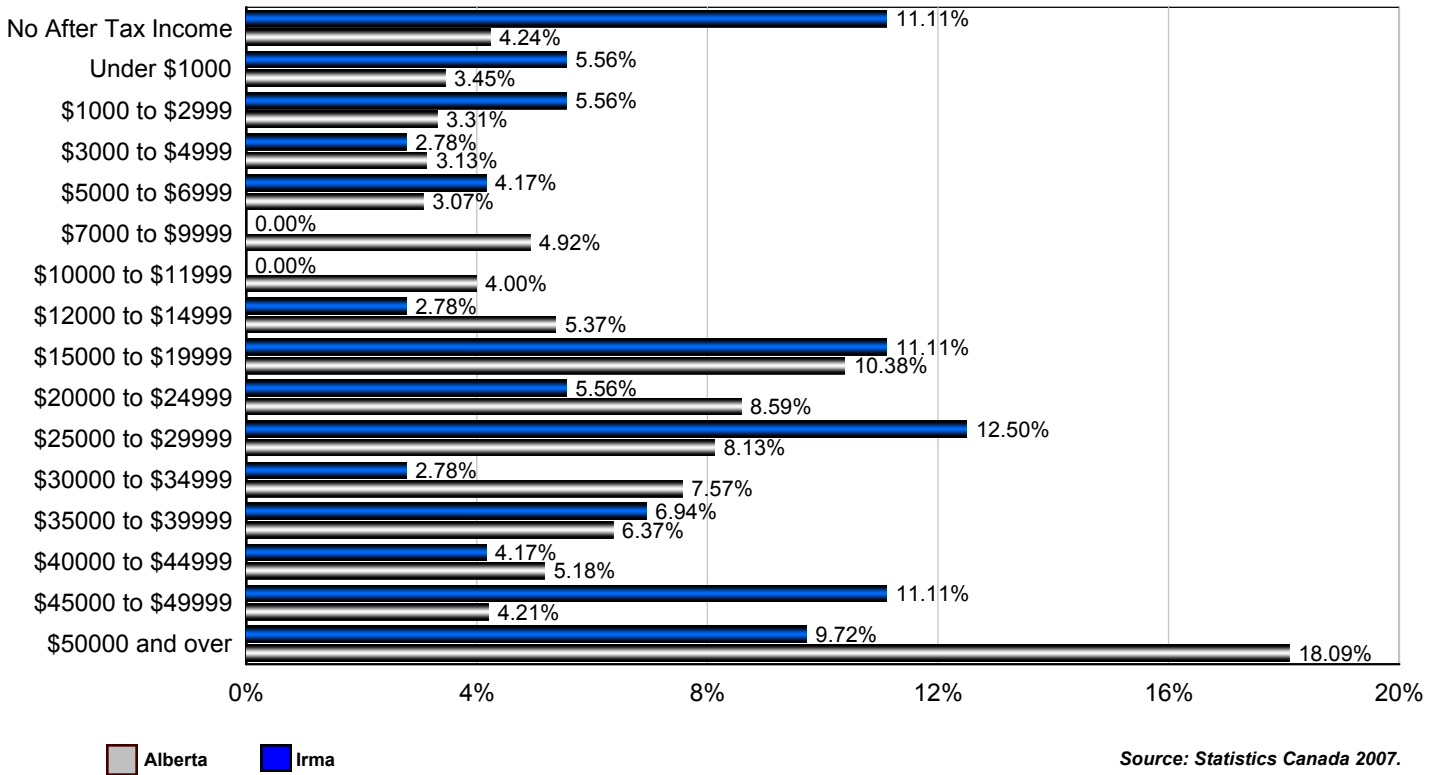
Occupation by Gender

Occupation	Males	Females	Total
Management Occupations	20	10	30
Business, Finance and Administration Occupations	0	30	30
Natural and Applied Sciences and Related Occupations	10	0	10
Health Occupations	0	10	10
Occupations in Social Science, Education, Government Service	0	10	10
Occupations in Art, Culture, Recreation and Sport	0	10	10
Sales and Service Occupations	0	35	35
Trades, Transport and Equipment Operators and Related Occupations	95	10	105
Occupations Unique to Primary	25	0	25
Occupations Unique to Processing, Manufacturing and Utilities	10	0	10
Total	160	115	275

Source: Statistics Canada 2007.
Irma, Alberta. 2006 Community Profiles. 2006 Census.
Statistics Canada Catalogue no. 92-591-XWE. Ottawa. Released March 13, 2007.

Income

Percent of Population 15+ by Income Bracket - Irma vs Alberta (2005)



Source: Statistics Canada 2007.
 Irma, Alberta. 2006 Community Profiles. 2006 Census.
 Statistics Canada Catalogue no. 92-591-XWE. Ottawa. Released March 13, 2007.

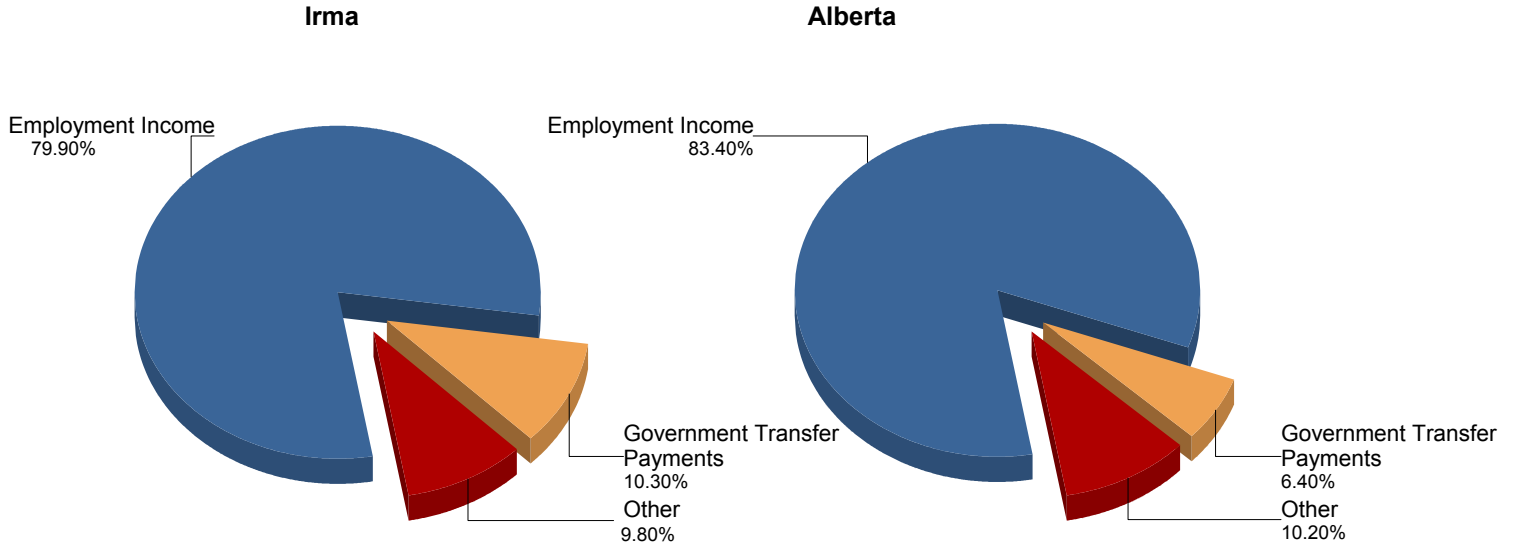
Population 15+ by Total After Tax Income - Irma (2005)

	Males	Females	Total
Without After-Tax Income	15	25	40
Under \$1,000	15	0	15
\$1,000 to \$2,999	10	10	20
\$3,000 to \$4,999	10	0	10
\$5,000 to \$6,999	0	20	20
\$7,000 to \$9,999	0	10	10
\$10,000 to \$11,999	0	0	0
\$12,000 to \$14,999	10	10	20
\$15,000 to \$19,999	10	30	40
\$20,000 to \$24,999	10	15	25
\$25,000 to \$29,999	15	20	35
\$30,000 to \$34,999	0	10	10
\$35,000 to \$39,999	20	10	30
\$40,000 to \$44,999	0	15	15
\$45,000 to \$49,999	40	0	40
\$50,000 and over	30	0	30
Total	185	170	360

Due to rounding consolidating the shown income brackets may lead to errors. Such errors would be most pronounced for small communities.

Source: Statistics Canada 2007.
 Irma, Alberta. 2006 Community Profiles. 2006 Census.
 Statistics Canada Catalogue no. 92-591-XWE. Ottawa. Released March 13, 2007.

Composition of Family Income for Economic Families - Irma vs Alberta (2005)



Economic family total income - The total income of an economic family is the sum of the total incomes of all members of that family.

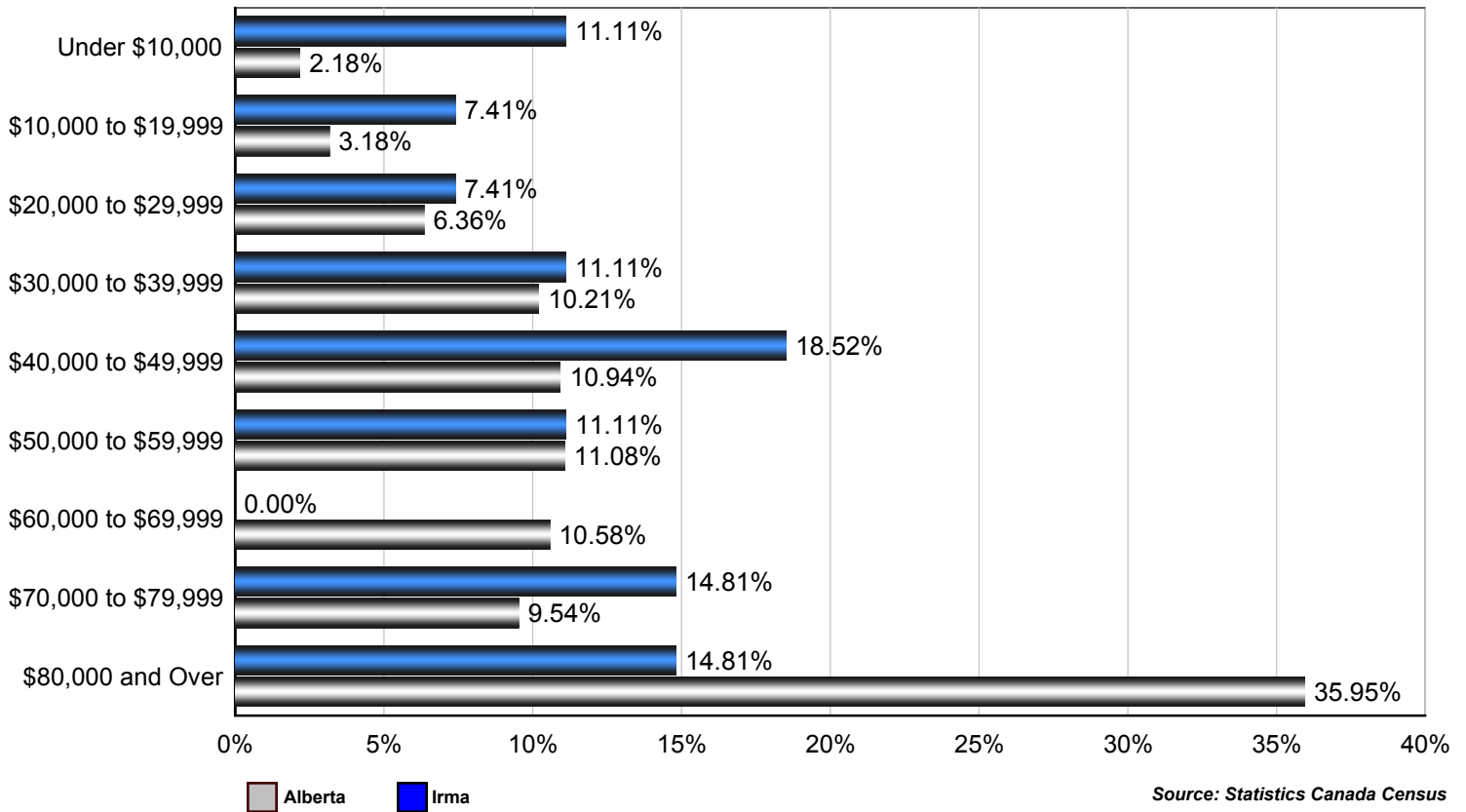
Source: Statistics Canada 2007.
 Irma, Alberta. 2006 Community Profiles. 2006 Census.
 Statistics Canada Catalogue no. 92-591-XWE. Ottawa. Released March 13, 2007.

Population 15+ With Employment Earnings - Irma (2005)

	Males	Females	Total
Earnings - As a % of total Earnings	78%	65%	70%
Median Employment Earnings	\$43,034	\$21,600	\$30,491
Average Employment Earnings	\$37,380	\$26,153	\$32,641

Source: Statistics Canada 2007.
 Irma, Alberta. 2006 Community Profiles. 2006 Census.
 Statistics Canada Catalogue no. 92-591-XWE. Ottawa. Released March 13, 2007.

Percent of Total Economic Families by After-tax Income Brackets - Irma vs Alberta (2005)



Number of Economic Families by After-tax Income Brackets - Irma (2005)

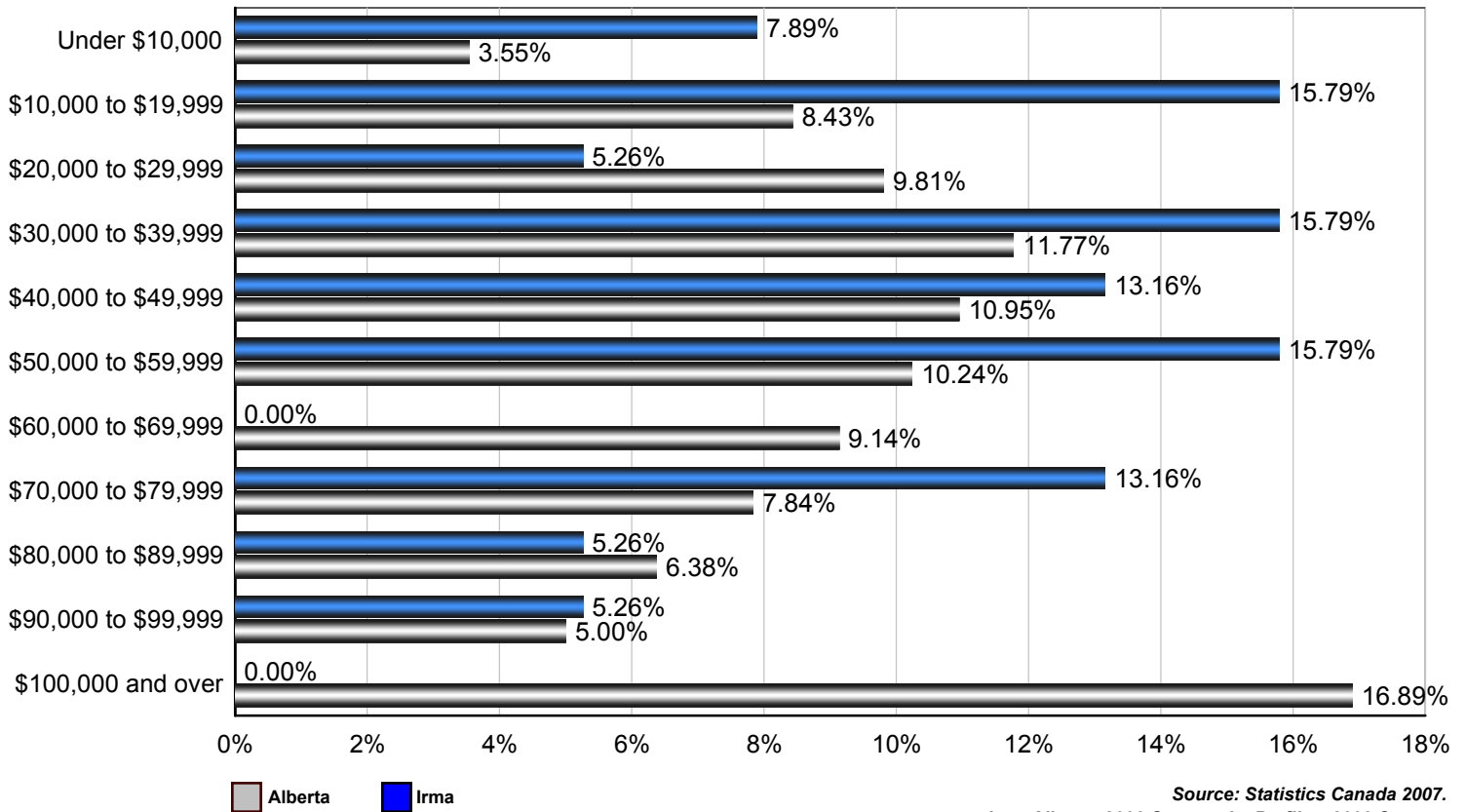
Income Bracket	Number of Families
Under \$10,000	15
\$10,000 to \$19,999	10
\$20,000 to \$29,999	10
\$30,000 to \$39,999	15
\$40,000 to \$49,999	25
\$50,000 to \$59,999	15
\$60,000 to \$69,999	0
\$70,000 to \$79,999	20
\$80,000 and over	20
Total	135

Family Income	
Median After-Tax Family Income	\$48,854
Average After-Tax Family Income	\$50,411

Due to rounding consolidating the shown income brackets may lead to errors. Such errors would be most pronounced for small communities.

Source: Statistics Canada 2007.
 Irma, Alberta. 2006 Community Profiles. 2006 Census.
 Statistics Canada Catalogue no. 92-591-XWE. Ottawa. Released March 13, 2007.

Percent of Total Private Households by After-tax Income Brackets - Irma vs Alberta (2005)



Source: Statistics Canada 2007.
 Irma, Alberta. 2006 Community Profiles. 2006 Census.
 Statistics Canada Catalogue no. 92-591-XWE. Ottawa. Released March 13, 2007.

Number of Private Households by After-tax Income Brackets - Irma (2005)

Income Bracket	Number of Families
Under \$10,000	15
\$10,000 to \$19,999	30
\$20,000 to \$29,999	10
\$30,000 to \$39,999	30
\$40,000 to \$49,999	25
\$50,000 to \$59,999	30
\$60,000 to \$69,999	0
\$70,000 to \$79,999	25
\$80,000 to \$89,999	10
\$90,000 to \$99,999	10
\$100,000 and Over	0
Total	190

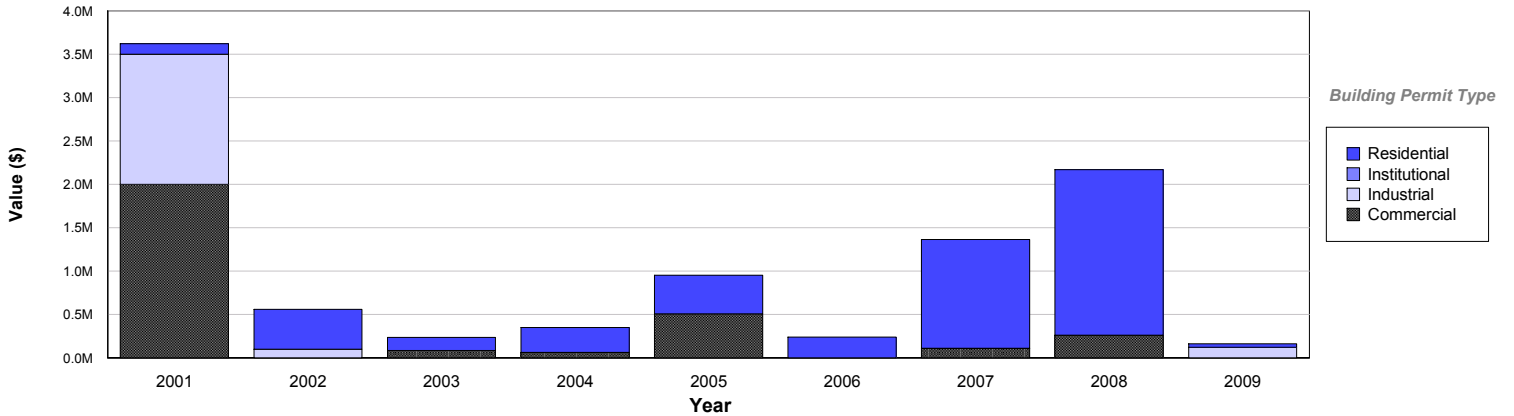
Family Income	
Median After-Tax Family Income	\$44,258
Average After-Tax Family Income	\$45,337

Due to rounding consolidating the shown income brackets may lead to errors. Such errors would be most pronounced for small communities.

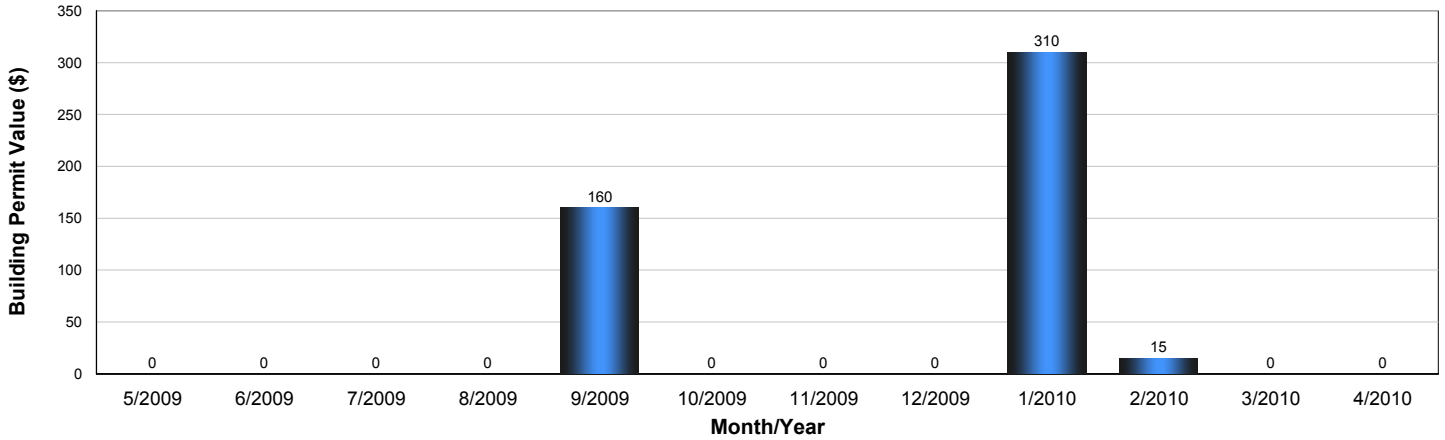
Source: Statistics Canada Census

Building Permits

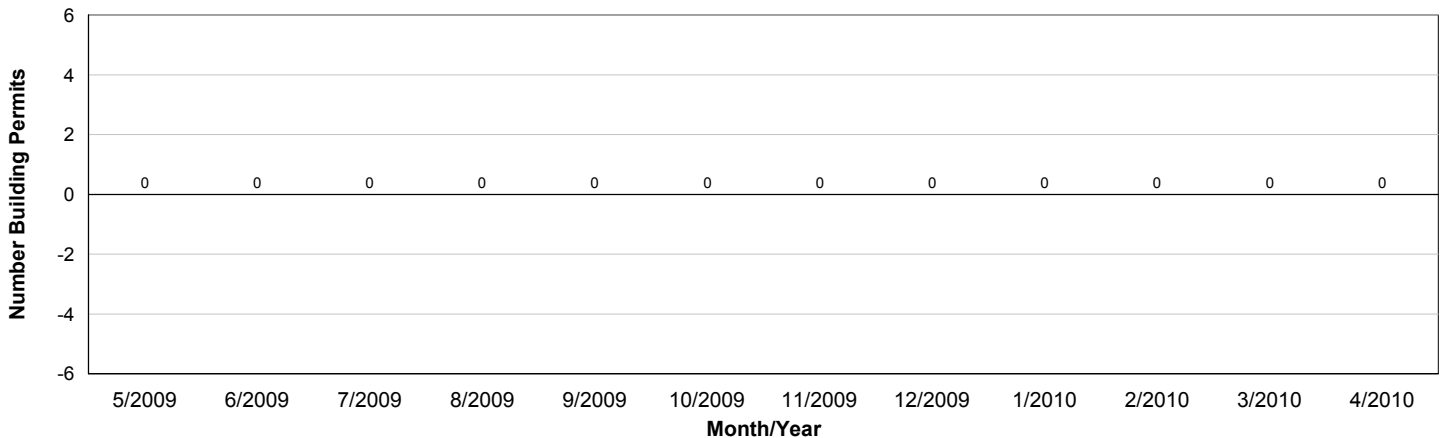
Value of Building Permits - Irma



Year	Residential	Industrial	Commercial	Institutional	Total
2009	\$40,000	\$120,000	\$0	\$0	\$160,000
2008	\$1,909,000	\$0	\$260,000	\$0	\$2,169,000
2007	\$1,253,000	\$1,000	\$110,000	\$0	\$1,364,000
2006	\$238,000	\$0	\$0	\$0	\$238,000
2005	\$445,000	\$0	\$505,000	\$0	\$950,000
2004	\$290,000	\$0	\$60,000	\$0	\$350,000
2003	\$151,000	\$0	\$85,000	\$0	\$236,000
2002	\$457,000	\$100,000	\$0	\$0	\$557,000
2001	\$121,000	\$1,500,000	\$2,000,000	\$0	\$3,621,000



Number of Building Permits - Irma

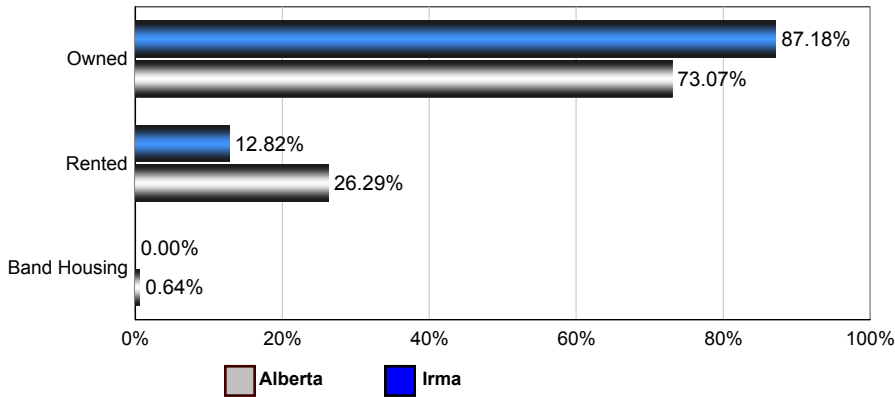


Source: Statistics Canada, Building Permits / Permis de bâtir, Publication 64-001-XWF, 2000 - 2009.

Dwellings

Number of Occupied Private Dwellings by Ownership - Irma

Irma vs Alberta (2006)



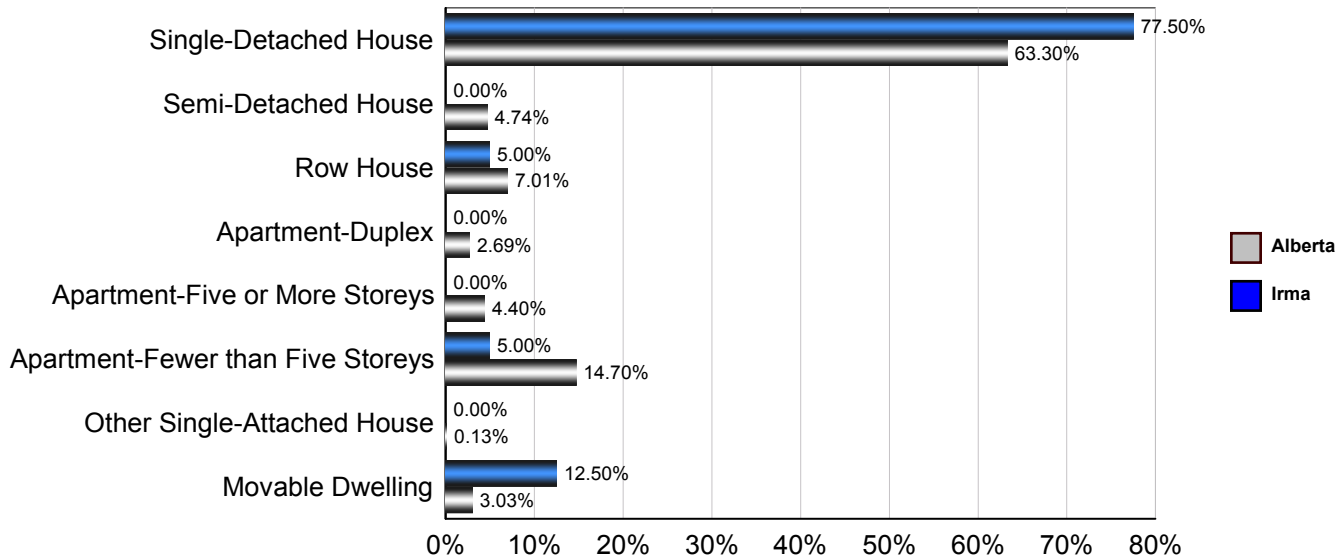
Irma

	1996	2001	2006
Owned	130	155	170
Rented	55	30	25
Band Housing	0	0	0
Total	185	185	195

Source: Statistics Canada 2007.
Irma, Alberta. 2006 Community Profiles. 2006 Census.
Statistics Canada Catalogue no. 92-591-XWE. Ottawa. Released March 13, 2007.

Number of Occupied Private Dwellings by Structural Type - Irma

Irma vs Alberta (2006)



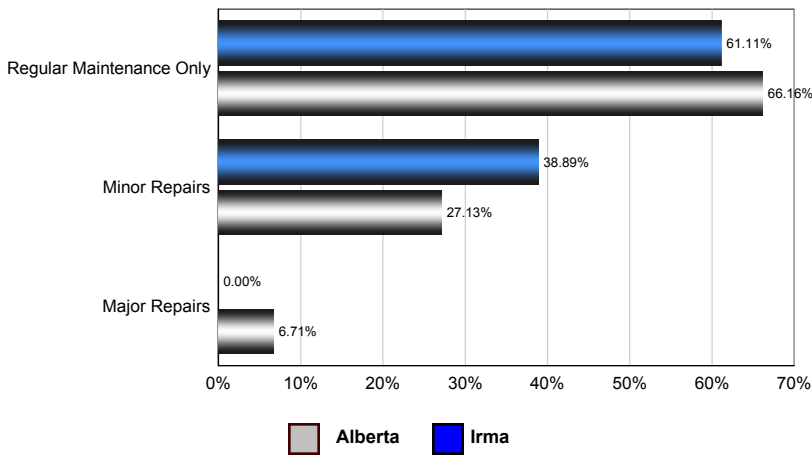
Irma

	1996	2001	2006
Single-Detached House	130	170	155
Semi-Detached House	0	0	0
Row House	20	0	0
Apartment - Duplex	0	0	0
Apartment - Five or More Storeys	0	0	0
Apartment - Fewer than Five Storeys	0	5	10
Other Single-Attached House	0	0	0
Movable Dwelling	35	0	25
Total	185	175	190

Source: Statistics Canada 2007.
Irma, Alberta. 2006 Community Profiles. 2006 Census.
Statistics Canada Catalogue no. 92-591-XWE. Ottawa. Released March 13, 2007.

Number of Occupied Private Dwellings by the Condition of Dwelling - Irma

Irma vs Alberta (2006)



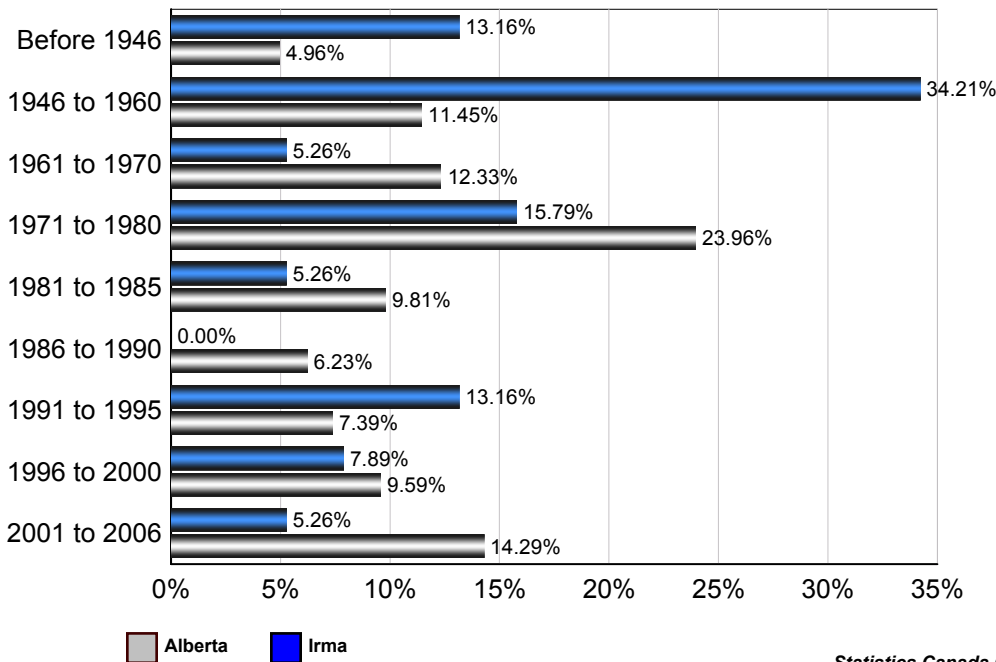
Irma

	1996	2001	2006
Regular Maintenance Only	100	85	110
Minor repairs	65	85	70
Major repairs	25	15	0
Total	190	185	180

Source: Statistics Canada 2007.
Irma, Alberta. 2006 Community Profiles. 2006 Census.
Statistics Canada Catalogue no. 92-591-XWE. Ottawa. Released March 13, 2007.

Number of Occupied Private Dwellings by Period of Construction - Irma

Irma vs Alberta (2006)



Irma

	2006
Before 1946	25
1946 to 1960	65
1961 to 1970	10
1971 to 1980	30
1981 to 1985	10
1986 to 1990	0
1991 to 1995	25
1996 to 2000	15
2001 to 2006	10
Total	190

Source: Statistics Canada 2007.
Irma, Alberta. 2006 Community Profiles. 2006 Census.
Statistics Canada Catalogue no. 92-591-XWE. Ottawa. Released March 13, 2007.

